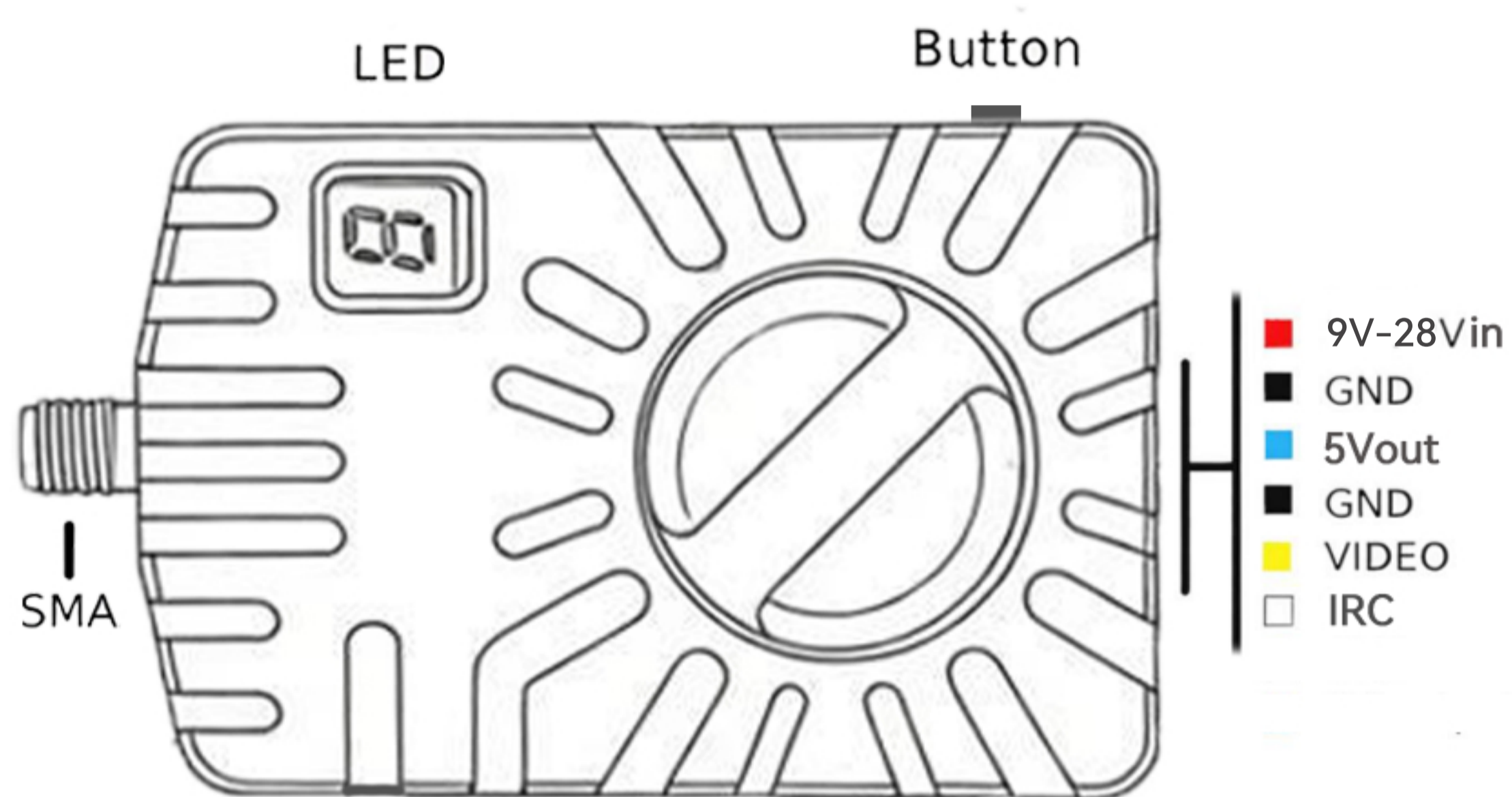


# TX8904 9.1G VTX

## PRODUCT SPECIFICATION

Input voltage	9V to 28V
Extra features	4W
Power supply	5V Camera @ under 180mA
Output power	25/100/200/1000/4000mW
Adjustment method	IRC/Button Frequency Contro, LED display
Microphone	Not supported
Antenna connector	SMA
Cable connector	JST, 6pin
Kit contents	1x VTX, 1x cable, 1x RF extension cable
Size	54 * 36 * 17.5 mm
Weight	36g



## Key features

- Support Smart audio
- 25/100/200/1000/4000mW power switchable
- Built-in cooling fan
- OSD configuration using smart audio
- 9-28 V input with 5 V output

## Button control Channel select mode

One button is used to set channel, band and power.

### Channel Select

Short press to change 8 channels.

### Band Select

Press the button for 2 seconds, LED will flicker an letter and a dot, then short press to change 8 band from A-B-E-F-R-P-H-U

### Power Select

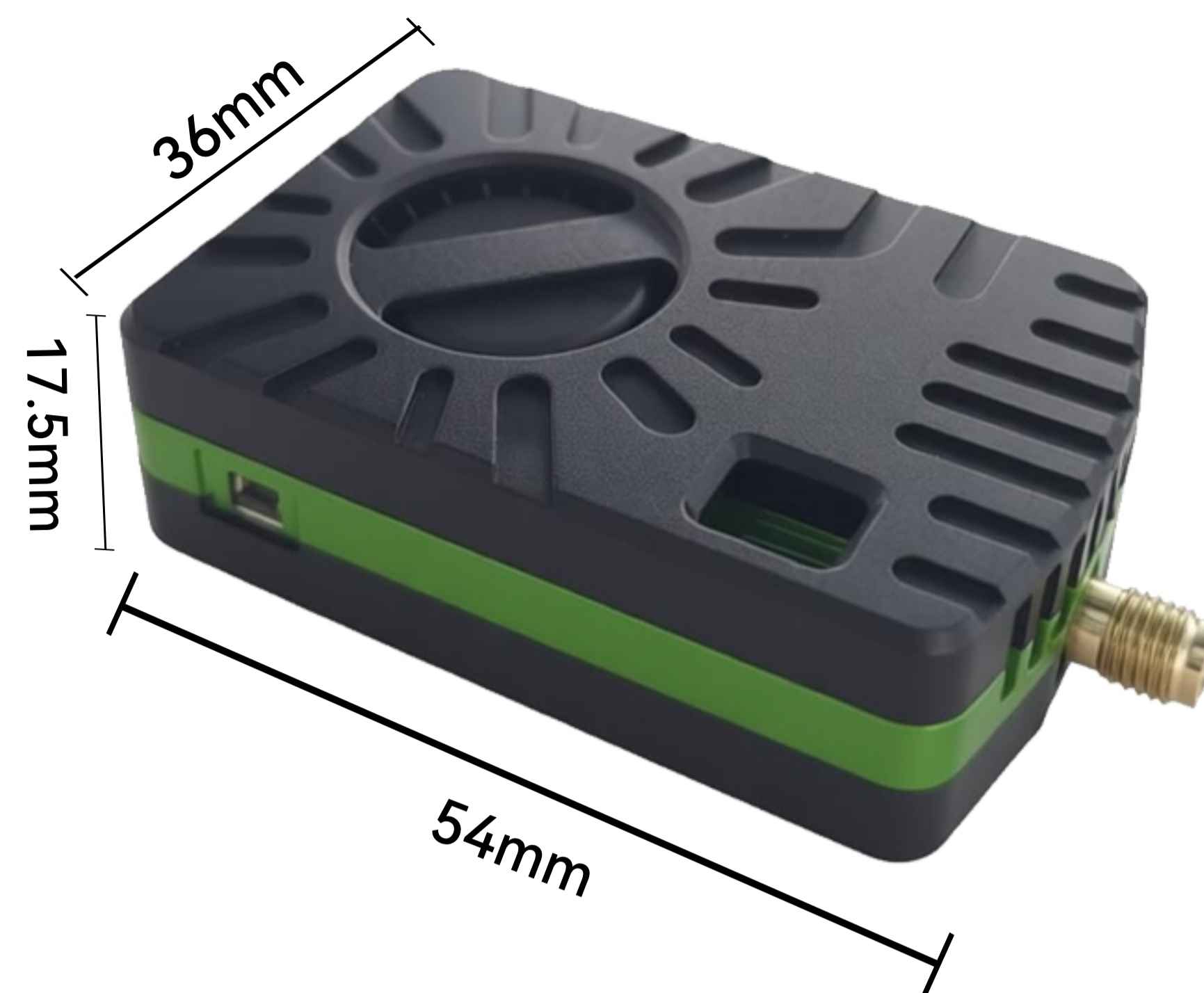
Press the button for 3 seconds, LED will flicker an number and a dot, then short press to change 8 power levels.

After setting, led will display letter-number-number and a dot, representing band-channel-power level

### Pit Mode

The VTX is fully accessible via smart audio. It supports Pit Mode.

## Size specification



## Exterior display



## VTX Operating Channel Table

	产品的实际频率表MHz							
	CH1	CH2	CH3	CH4	CH5	CH6	CH7	CH8
A	8020	8040	8060	8080	8100	8120	8140	8160
B	8180	8200	8220	8240	8260	8280	8300	8320
E	8340	8360	8380	8400	8420	8440	8460	8480
F	8500	8520	8540	8560	8580	8600	8620	8640
R	8660	8680	8700	8720	8740	8760	8780	8800
P	8820	8840	8860	8880	8900	8920	8940	8960
H	8980	9000	9020	9040	9060	9080	9100	9120
U	8035	8185	8335	8485	8635	8785	8935	9085

### HOT CAUTION:

**BE CAREFUL NOT TO BURN YOUR FINGERS  
PLUG THE ANTENNA BEFORE POWERING THE VTX  
DO NOT REMOVE COOLING FAN**