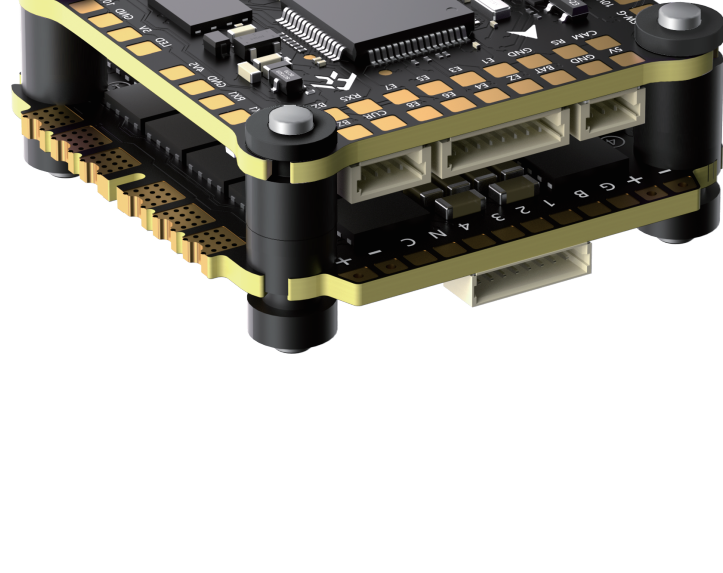


FlyFishRC V1.2 Stack

User Manual

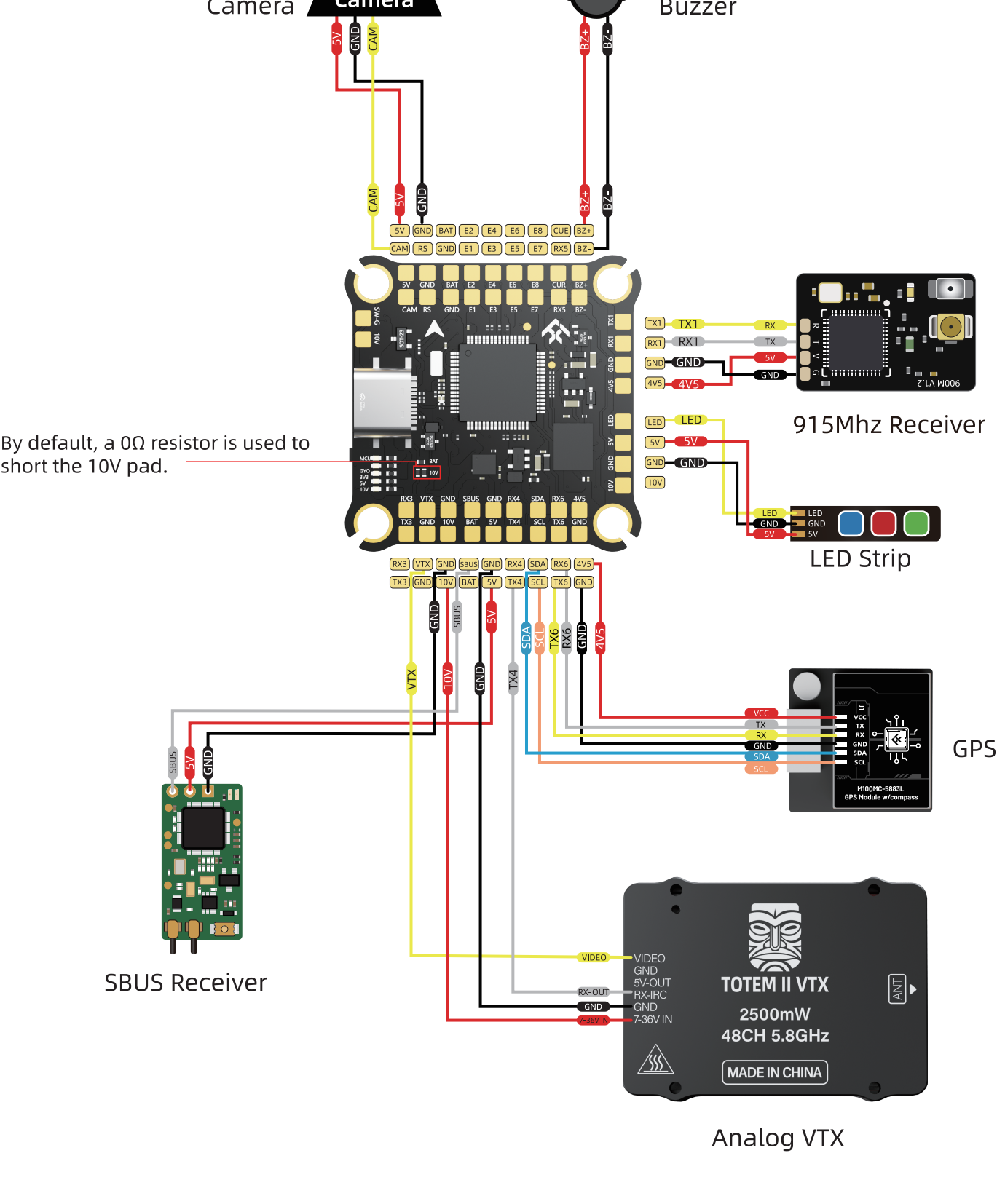
v1.0



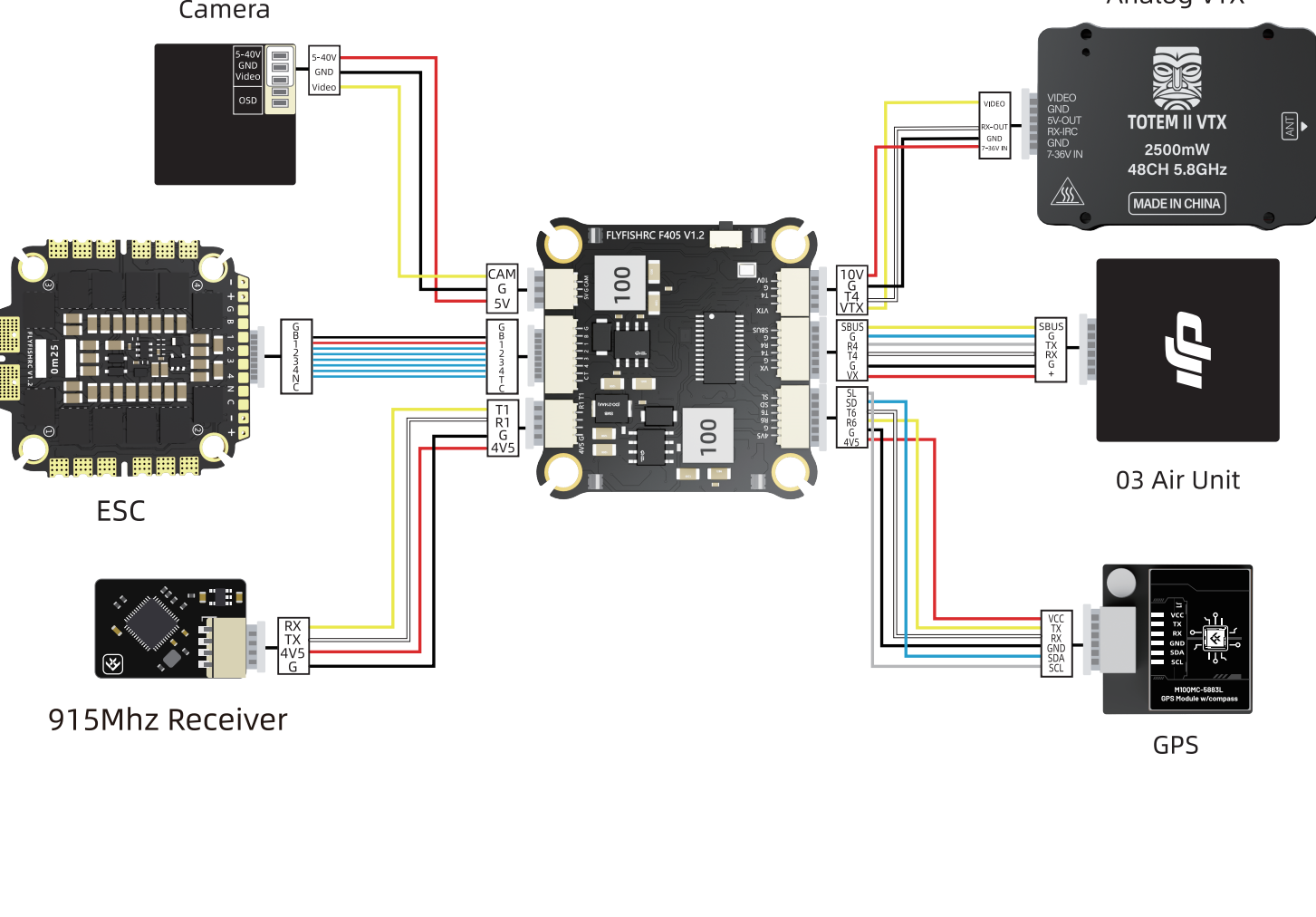
FC Product Specifications

- MCU: STM32F405RGT6
- Frequency: 168MHz
- GYRO: ICM-42688-P
- OSD: AT7456E
- Blackbox: 16M Memory
- Uarts: 6 Set(USB occupy UART2)
- Receiver: CRSF/SBUS/IBUS/DSM
- Input: 2-8S lipo(7.4-33.6V)
- BEC1: 5V/3A
- BEC2: 10V/2.5A
- Motor: 8 Set
- RSSI Pad: Yes
- Buzzer Pad: Yes
- CURR Pad: Yes
- LED: Yes
- I2C: YES
- DJI O3 Air Unit: YES
- TVS Protection: Yes
- Configurator: Betaflight
- Mounting: 30.5*30.5mm/M3
- Weight: 9.6g

Top view



Bottom view :Plug and play



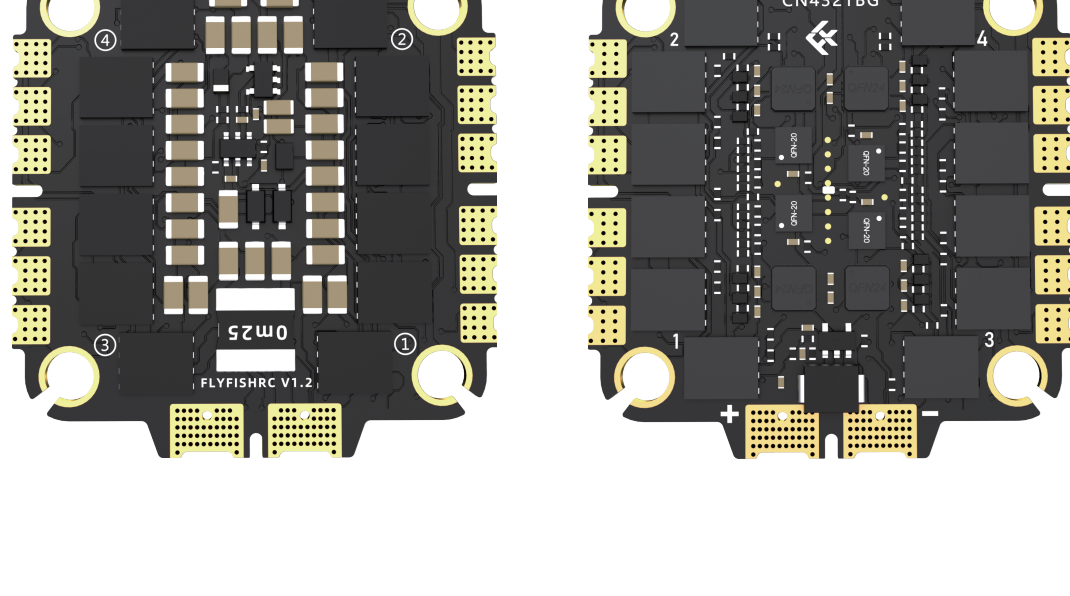
ESC Product Specifications

ESC: FlyFishRC 50A V1.2

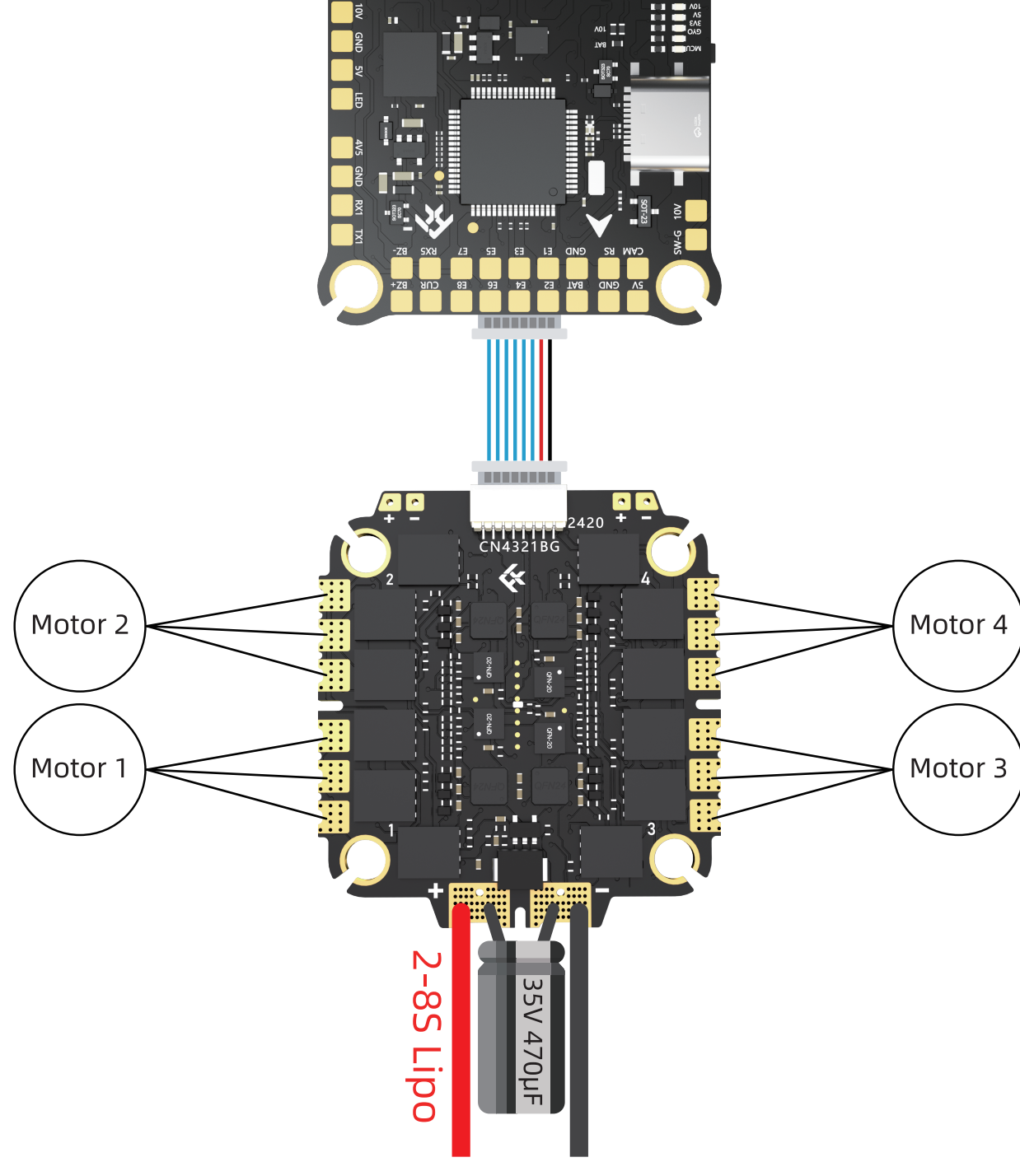
- CURR: Yes
- Output Current: 50A
- Peak Current: 55A
- Input: 2-8S lipo(7.4-33.6V)
- BL: BLS
- Target: GH40
- Protocol: Dshot 300/600
- Mounting: 30.5*30.5mm/M3
- Weight: 15.3g

ESC: FlyFishRC 60A V1.2

- CURR: Yes
- Output Current: 60A
- Peak Current: 65A
- Input: 2-8S lipo(7.4-33.6V)
- BL: BLS
- Target: GH40
- Protocol: Dshot 300/600
- Mounting: 30.5*30.5mm/M3
- Weight: 15.3g



Diagram



Amperage Meter			
Battery	0.00A	120	Scale[1/10th mV/A]
		0	Offset [mA]