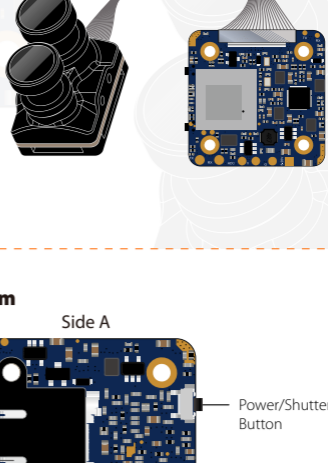
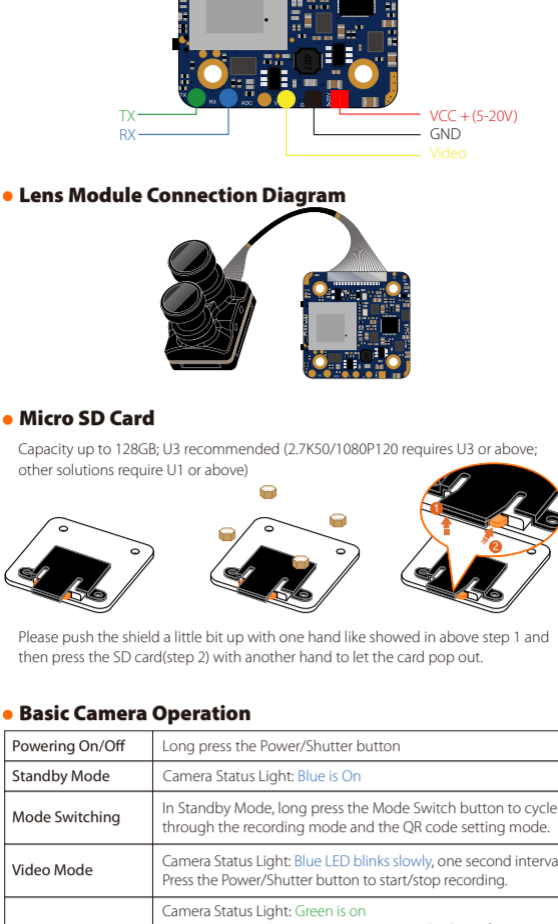


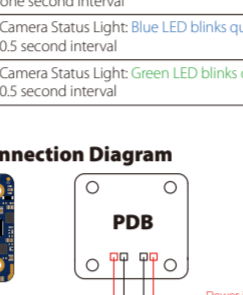
RunCam Hybrid 2 User Manual



● Instruction Diagram

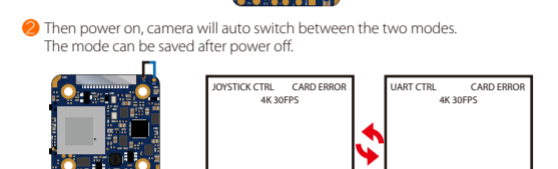


● Lens Module Connection Diagram



● Micro SD Card

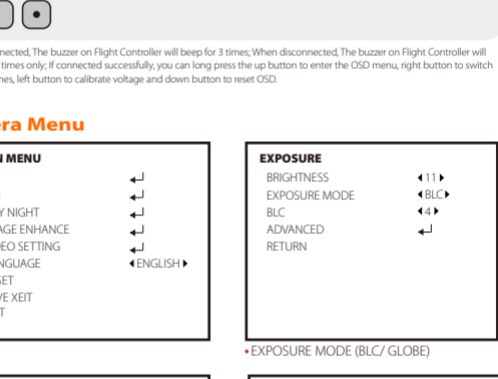
Capacity up to 128GB; U3 recommended (2.7K50/1080P120 requires U3 or above; other solutions require U1 or above)



● Basic Camera Operation

Powering On/Off	Long press the Power/Shutter button
Standby Mode	Camera Status Light: Blue is on
Mode Switching	In Standby Mode, long press the Mode Switch button to cycle through the recording mode and the QR code setting mode.
Video Mode	Camera Status Light: Blue LED blinks slowly , one second interval Press the Power/Shutter button to start/stop recording.
QR Code Setting	Camera Status Light: Green is on Use RunCam App to access to RunCam Hybrid interface, set it and create the QR code. Under QR code setting mode, use camera to scan the QR code. Switch to standby mode automatically after scanning successfully. The status light is Blue.
HD Recording Firmware Update	Camera Status Light: Green LED blinks slowly , one second interval
SD Card Issues	Camera Status Light: Blue LED blinks quickly , 0.5 second interval
Lens Module Bad Connection	Camera Status Light: Green LED blinks quickly , 0.5 second interval

● Transmitter Connection Diagram



Warning: Current Input ≥1A (Don't powered by VTx)

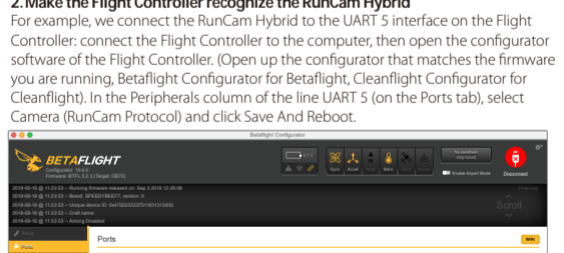
● FPV Flight Controller Setup

FPV camera supports Joystick Control and UART Control. The top left corner of the screen will shortly display the current control mode. The default is Joystick control mode. You can switch the mode via below way:

1 Short the two camera control pins (TX and RX on board as shown in below picture)

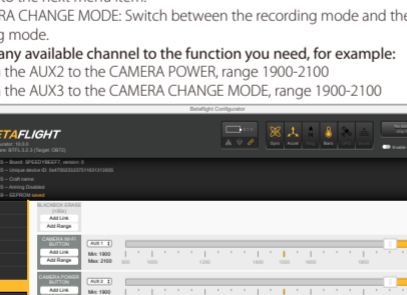


2 Then power on, camera will auto switch between the two modes. The mode can be saved after power off.



3 After switching to the desired mode, please unplug the short-circuit cable.
UART Control works with Flight Controllers:
BetaFlight 3.3 or above / ButterFlight 3.4 or above / CleanFlight 2.2 or above

● Joystick Control



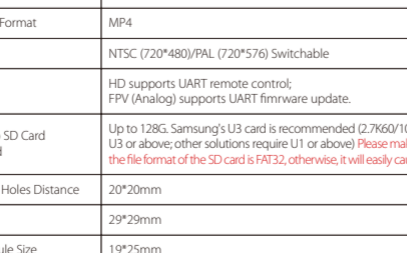
● FPV OSD Menu

JOYSTICK CTRL CARD ERROR 4K 30FPS	<ul style="list-style-type: none"> • JOYSTICK CTRL: Camera is under Joystick Control and the icon remains for 5 seconds. • CARD ERROR: Card error or no SD card • CARD FULL: SD card is full • 4K 30FPS: Current video resolution, remains for 10 seconds
---	---

0123456789ABCDEF KLMNOPQRSTUVWXYZ&=;/ CLR RUNCAM ___	<p>Quick Setting (Long press the upper button to enter the menu)</p> <ul style="list-style-type: none"> • Press the middle button to switch ON / OFF • CLR: Clear RUNCAM logo or pilot's name • POS: Move to POS to adjust position • SHARP VIEW: Turn on, it will increase the image details, but also noise • WIDESCREEN: Switch image ratio between 16:9 and 4:3. • SYSTEM: Press the middle button to switch NTSC/PAL. It will work only after you exit the menu and reboot. • EXIT: Exit and saved.
--	---

● UART Control

1. Flight controller wiring (Take UART3 for example)



2. Betaflight 3.3 or above setting
Just need to choose "Camera (RunCam Protocol)" on UART 3 as shown in below screenshot.

Identifier	Configuration/MS	Serial Rx	Telemetry Output	Sensor Input	Peripherals
UART1	115200	Disabled	AUTO	Disabled	AUTO
UART2	115200	Disabled	AUTO	Disabled	AUTO
UART3	115200	Disabled	AUTO	Disabled	Camera (RunCam)
UART4	115200	Disabled	AUTO	Disabled	AUTO
UART5	115200	Disabled	AUTO	Disabled	AUTO

3. UART Control (Operate with your remote controller. Yellow icon to indicate bar operation direction. Black dot means centering control)



* When connected, the buzzer on Flight Controller will beep for 3 times; When disconnected, The buzzer on Flight Controller will beep for 2 times only; If connected successfully, you can long press the up button to enter the OSD menu, right button to switch preset scenes, left button to calibrate voltage and down button to reset OSD.

● Camera Menu

MAIN MENU AE WB DAY NIGHT IMAGE ENHANCE VIDEO SETTING LANGUAGE RESET SAVE XEIT EXIT	← → ← → ← → ← → ← → ← → ← → ← →
---	--

BRIGHTNESS BRIGHTNESS EXPOSURE MODE BLC ADVANCED RETURN	← 11 → ← BLC → ← 4 → ← →
---	-----------------------------------

WB MODE RGAIN BGAIN RETURN	← MWB → ← 20 → ← 19 →
---	-----------------------------

DAY NIGHT MODE RETURN	← COLOR →
------------------------------------	-----------

VIDEO SETTING VIDEO STANDARD HD FORMAT IMAGE RATIO HORIZONTAL INVERTED VERTICAL INVERTED WDR RETURN	← PAL → ← CVBS → ← 4:3 → ← OPEN → ← OPEN → ← COLOR →
---	---

IMAGE ENHANCE CONTRAST VALUE SHARPNESS VALUE COLOR GAIN VALUE 3DNR VALUE RETURN	← MANUAL → ← 30 → ← MANUAL → ← 6 → ← MANUAL → ← 11 → ← MANUAL → ← 0 →
---	--

● HD Flight Controller Set

Preparation

- Firmware: BetaFlight Firmware (≥3.2.0), CleanFlight Firmware (≥2.1.0), KISS Firmware (≥1.3-RC30) or INAV Firmware (≥1.7.3).
- Any available UART interface on the Flight Controller

1. Connect the RunCam Hybrid with the UART interface of the Flight Controller

2. Make the Flight Controller recognize the RunCam Hybrid
For example, we connect the RunCam Hybrid to the UART 5 interface on the Flight Controller; connect the Flight Controller to the computer, then open the configurator software of the Flight Controller. (Open up the configurator that matches the firmware you are running, Betaflight Configurator for Betaflight, Cleanflight Configurator for Cleanflight). In the Peripherals column of the line UART 5 (on the Ports tab), select Camera (RunCam Protocol) and click Save and Reboot.

3. Instructions of the functions of the camera and assigning transmitter channels to them
In the Flight Controller Configurator, navigate to the Modes tab. There are new CAMERA WI-FI, CAMERA POWER and CAMERA CHANGE modes

- CAMERA POWER: start/stop the video. When in the OSD of the camera, this is used to move to the next menu item.
- CAMERA CHANGE MODE: Switch between the recording mode and the QR code setting mode.

Assign any available channel to the function you need, for example:

- Assign the AUX2 to the CAMERA POWER, range 1900-2100
- Assign the AUX3 to the CAMERA CHANGE MODE, range 1900-2100

4. Assign the channel to the switch of the controller
Please choose your Model on the controller, then access to the MIXER interface and assign the channel to the switch of the controller. Take openx2.2.0 for example, assign the channels CH5, CH6 and CH7 to SA, SB and SD respectively

5. Test
Power the Flight Controller and the RunCam Hybrid

- Set the SA to the bottom, the camera starts/stops the video
- Set the SD to the bottom, the camera switches among the two modes: video and OSD setting mode

● Technical Support

Please visit: <https://support.runcam.com>

● Parameter

HD sensor	SONY BMP	
Analog sensor	SONY 1.3MP	
Field of View(FOV)	HD Recording FOV 145°; (FPV FOV 150° @4:3)	
Video Resolution	4K@30fps / 2.7K@60fps / 2.7K@50fps / 1080P@120fps / 1080P@60fps / 1080P@50fps / 1080P@30fps	
Video File Format	MP4	
TV Mode	NTSC (720*480)/PAL (720*576) Switchable	
Interface	HD supports UART remote control; FPV (Analog) supports UART firmware update.	
Max Micro SD Card Supported	Up to 128G. Samsung's U3 card is recommended (2.7K50/1080P120 requires U3 or above; other solutions require U1 or above) Please make sure that the file format of the SD card is FAT32, otherwise, it will easily cause errors.	
Mounting Holes Distance	20*20mm	
PCB Size	29*29mm	
Lens Module Size	19*25mm	
Lens Specs	HD Lens: M10	FPV Lens: M8
Power Input	DC 5-20V (Non-direct power supply from 4s battery or above. Powered directly with battery will generate surges and burn the camera.)	
Working Current	480mA @5V / 140mA @1.2V	
Weight	18g	