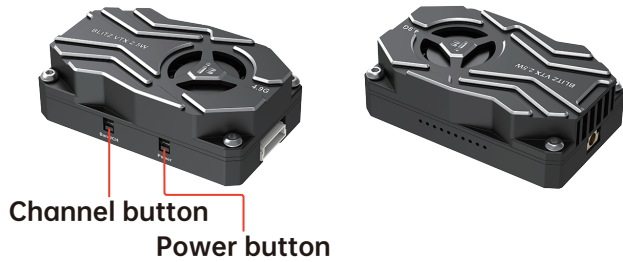


BLITZ Whoop 4.9G 2.5W VTX Instructions



Button Operation

1.Channel button;

Channel(blue light): Short press the button once, LED light indicates channel CH1 to CH8 (sort from left to right) , short press to switch the channel.

2.Power button;

Power(green light): Long press for 2 seconds to enter or exit PIT mode, green LED light indicates entering PIT mode.

Power(green light): Short press the button once, the LED light blinks to indicate the output rate of the video transmission, short press to change the output power.

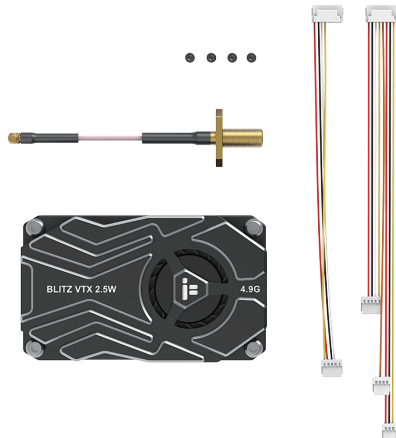
Blinking 1 time = 25mW, blinking 2 times = 400mW, blinking 3 times = 1000mW, blinking 4 times = 2500mW.

Frequency Table

Note: Antennas must be installed BEFORE powering on.
The VTX can be damaged when using without proper cooling.

Channel							
CH1	CH2	CH3	CH4	CH5	CH6	CH7	CH8
4990MHz	5020MHz	5050MHz	5080MHz	5110MHz	5140MHz	5170MHz	5200MHz

Packing List



1.Specs:

Power levels: PIT/25mW/400mW/1000mW/2500mW
Mounting pattern: 25.5*25.5mm/ø1.6mm
Dimensions: 50*30*16mm
Interface: MMCX
nput Interface: SH1.0 8P
VTX telemetry: /
Channels: 8CH
Weight: 32g

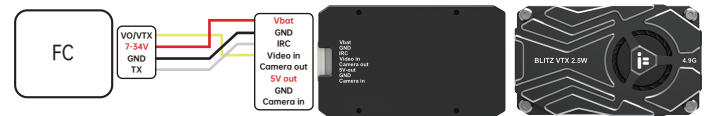
2.Ports:

Vbat: 2-8S, 7-34V Positive Input
GND: Negative
IRC: /
Video in: Video Signal Input
Camera out: Camera signal output
5V out: 5V Voltage Output
GND: Negative
Camera in: Camera signal input

3.Attention:

- (1) Please read the instructions for proper wiring before use.
- (2) It is recommended that before switching on the power, make sure that the antenna has been installed, it can extend the life of the module.
- (3) The corresponding 4.9G antenna must be installed before powering on to avoid burning out the PA chip.
- (4) Please keep enough space when you install the VTX to ensure air convection around the module for heat dissipation. Otherwise, the module will enable overheat protection and the power transmission will be reduced or even switched off.

Connect VTX to FC



Enable the corresponding VTX IRC Tramp on UART port

Interface	Configurable	FW/Fn	Transmit	Control	Receive
UART1	IRC 115200	3	Disabled	AUTO	Disabled
UART2	115200	0	Disabled	AUTO	VTX IRC Tramp
UART3	115200	0	Disabled	AUTO	Disabled
UART4	115200	0	Disabled	AUTO	GPS 115200
UART5	115200	0	Disabled	AUTO	Disabled
UART6	115200	0	Disabled	AUTO	ESC

Camera to VTX without FC

