

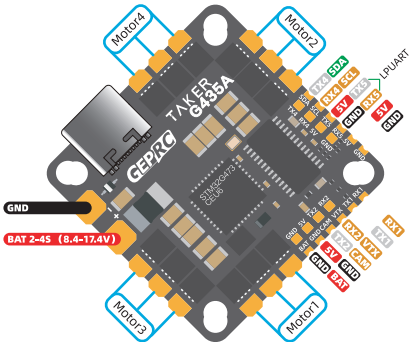
## 飞控参数

固件目标:	TAKERG4AIO
主控:	STM32G473CEU6
陀螺仪:	ICM 42688-P
黑匣子:	16MB板载闪存
气压计:	NO
BEC 5V:	3A
最大外尺寸:	33.4*34.4, $\phi$ 3.05mm
安装孔位:	25.5*25.5、26.5*26.5兼容
输入电压:	2-4S
Uart串口:	4个

## 电调参数

持续电流:	35A
瞬间电流:	45A(5S)
支持电池:	2-4s (8.4-17.4V)
支持固件:	BLHeli_S Bluejay

## 接口定义：



# DJI 数字图传:

- 设置
- 端口
- 配置
- 动力&电池
- 失控保护

- PID调校
- 接收机
- 模式

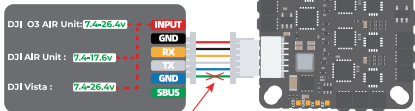
标识符	设置/MSP	串行数字接收机
USB VCP	<input checked="" type="checkbox"/> 115200 ▼	<input type="checkbox"/>
UART1	<input checked="" type="checkbox"/> 115200 ▼	<input type="checkbox"/>
UART2	<input type="checkbox"/> 115200 ▼	<input checked="" type="checkbox"/>

接收机

Serial (Via UART) ▼ 接收机模式

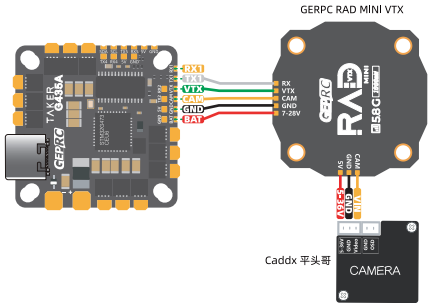
注意: 使用串行接收机时, 请选择串口接收机类型, 并在串口页面设置相应的串口。

SBUS ▼ 串行数字接收机协议



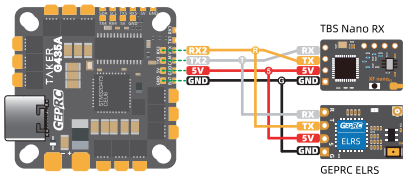
如果使用外置接收机, 请断开此线

## 模拟图传：



设置	标识符	设置/MSP	.....	外设
串口	USB VCP	<input type="checkbox"/> 115200 ▾	.....	已禁用 ▾ AUTO ▾
配置	UART1	<input checked="" type="checkbox"/> 445200 ▾	➔	VTX (IRC Tramp) ▾ AUTO ▾
	UART2	<input type="checkbox"/> 115200 ▾	.....	已禁用 ▾ AUTO ▾

# 接收机：（TBS Nano RX/ELRS）



标识符	设置/MSP	串行数字接收机
USB VCP	<input checked="" type="checkbox"/> 115200 ▾	<input type="checkbox"/>
UART1	<input type="checkbox"/> 115200 ▾	<input type="checkbox"/>
UART2	<input checked="" type="checkbox"/> 115280 ▾	<input checked="" type="checkbox"/>



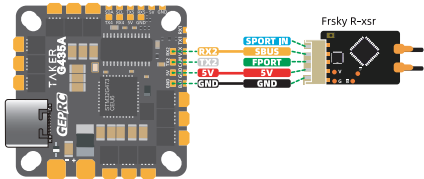
接收机

Serial(via UART) ▾ 接收机模式

注意：使用串行接收机时，请选择串行接收机类型，并在串口页面设置相应的串口。

CRSF ▾ 串行数字接收机协议

# 接收机： (Frsky R-xsr)



标识符	设置/MSP	串行数字接收机
USB VCP	<input checked="" type="checkbox"/> 115200 ▾	<input type="checkbox"/>
UART1	<input type="checkbox"/> 115200 ▾	<input type="checkbox"/>
UART2	<input checked="" type="checkbox"/> 115200 ▾	<input checked="" type="checkbox"/>



接收机

Serial(via UART) ▾ 接收机模式

注意：使用串行接收机时，请选择串行接收机类型，并在串口页面设置相应的串口

SBUS ▾ 串行数字接收机协议

# GPS:

设置	标识符		传感器输入
端口	USB VCP		已禁用 AUTO
配置	UART1		已禁用 AUTO
动力&电池	UART2		已禁用 AUTO
失控保护	LPUART	→	GPS 115200

设置

端口

配置

动力&电池

失控保护

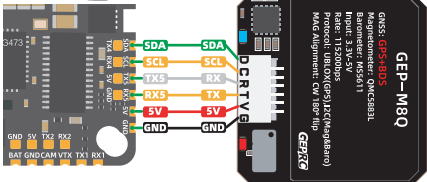
GPS 启用GPS导航

UBLOX 协议

自动波特率

自动设置

设置单次返航点



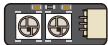
## 蜂鸣器&LED:

GEPRC 超级蜂鸣器



BZ-  
5V  
GND

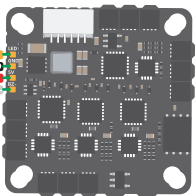
蜂鸣器



LED灯带

DIN  
5V  
GND

LED  
GND  
5V  
BUZ-





# 外置LED设置:

设置 其他功能

- SERVO\_TILT 舵机云台
- SOFTSERIAL 启用软串口
- SONAR 声呐
- TELEMERY 遥测输出
- LED\_STRIP 彩色RGB LED灯带

电机 LED灯带布线

布线模式 清除已选定 清除所有布线

LED功能

基本功能 颜色

颜色修改器 闪烁

- 油门
- 左右扫描
- 警告
- 指示灯
- 图传 (根据图传频率而变化)

LED方向 ('模式'和'方向')和颜色



给每个LED选择一个颜色



## 注意事项:

- 1 3寸及3寸以上的飞行器需要安装电容，包装内附带了一颗
  - 2 焊接的电线尽量避开陀螺仪，以免影响陀螺仪正常工作
  - 3 装机后请仔细检查连线是否正确，保持飞控整体干净 无多余焊锡残留
- 

格普官方QQ群: 499699918

格普官方微信:



wechat

格普淘宝:



geprc.taobao.com

格普官网:



www.geprc.com

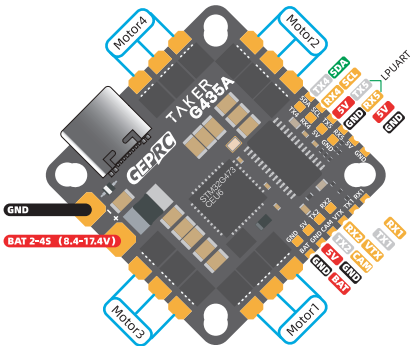
## FC:

target:	TAKERG4AIO
MCU:	STM32G473CEU6
IMU:	ICM 42688-P
BLACKBOX:	16MB
Baro:	NO
BEC:	5V 3A
Size:	33.4*34.4,
Install hole:	25.5-26.5 $\phi$ 3.05mm
Input Voltage:	2-4S LiPo
Uart:	4 Set

## ESC:

Continuous Current:	35A
Burst Current:	45A(5S)
Input Voltage:	2-4S (7.4-17.4V)
Support Firmwar:	<a href="#">BLHeli_S</a> <a href="#">Bluejay</a>

## Interface definition:



# DJI FPV Digital System:



Identifier	Configuration/MSP	Serial RX
USB VCP	<input checked="" type="checkbox"/> 115200 ▾	<input type="checkbox"/>
UART1	<input checked="" type="checkbox"/> 115200 ▾	<input type="checkbox"/>
UART2	<input type="checkbox"/> 115200 ▾	<input checked="" type="checkbox"/>

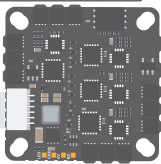
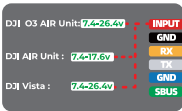


Receiver

Serial (Via UART) ▾ Receiver Mode

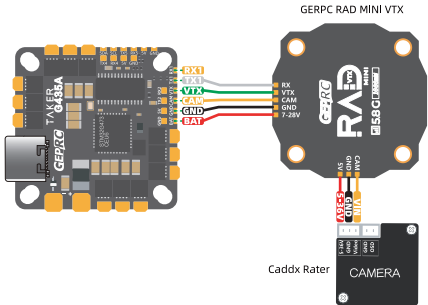
- The UART for the receiver must be set to 'Serial Rx'(in the Ports tab)
- Select the correct data format from the drop-down,below:

SBUS ▾ Serial Receiver Provider



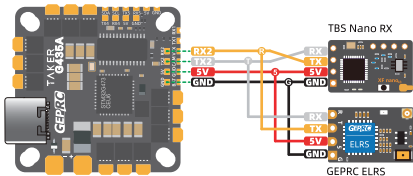
If using an external receiver, disconnect this line

# Analog VTX:



	Identifier	Configuration/MSP	.....	Peripherals	
Setup	USB VCP	<input type="checkbox"/> 115200	.....	Disabled	AUTO
Ports	UART1	<input checked="" type="checkbox"/> 115200	→	VTX (IRC Tramp)	AUTO
Configuration	UART2	<input type="checkbox"/> 115200	.....	Disabled	AUTO

# Receiver: (TBS Nano RX/ELRS)



Identifier	Configuration/MSP	Receiver
USB VCP	<input checked="" type="checkbox"/> 115200 ▼	<input type="checkbox"/>
UART1	<input type="checkbox"/> 115200 ▼	<input type="checkbox"/>
UART2	<input type="checkbox"/> 115280 ▼	<input checked="" type="checkbox"/>



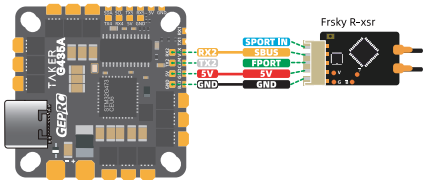
Receiver

Serial(via UART) Receiver Mode

The UART for the receiver must be set to 'Serial Rx'(in the Ports tab)  
Select the correct data format from the drop-down,below:

CRSF Serial Receiver Provider

# Receiver: (Frsky R-xsr)



- Setup
- Ports
- Configuration
- Power&Battery
- Failsafe

Identifier	Configuration/MSP	Receiver
USB VCP	<input checked="" type="checkbox"/> 115200 ▾	<input type="checkbox"/>
UART1	<input type="checkbox"/> 115200 ▾	<input type="checkbox"/>
UART2	<input type="checkbox"/> 415280 ▾	<input checked="" type="checkbox"/>

- PID
- Receiver
- Modes

Receiver

Serial(via UART) ▾ Receiver Mode

The UART for the receiver must be set to 'Serial Rx'(in the Ports tab)  
Select the correct data format from the drop-down,below:

SBUS ▾ Serial Receiver Provider



# GPS:

Setup	Identifier		Sensor Input	
Ports	USB VCP		Disabled	AUTO
Configuration	UART1		Disabled	AUTO
Power&Battery	UART2		Disabled	AUTO
Failsafe	LPUART		GPS	115200

Setup

Ports

Configuration

Power&Battery

Failsafe

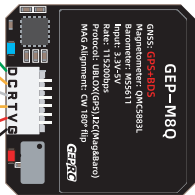
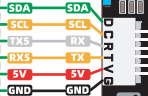
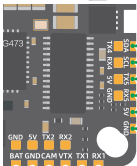
GPS GPS for navigation and telemetry

UBLOX protocol

Auto Baud

Auto Config

Set Home Point Once



# Buzzer&LED:

GEPRC Super Buzzer



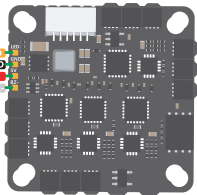
BZ-  
5V  
GND

BUZZER

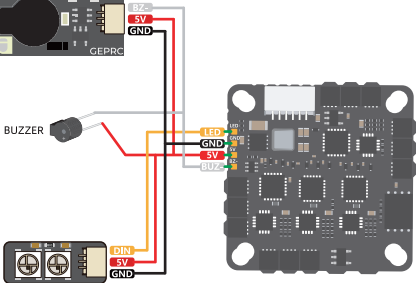


LED

DIN  
5V  
GND



LED  
GND  
5V  
BZ-



# LED Setup:

Stepup

Ports

Configuration

Power&Battery

Failsafe

Other Features

- SERVO\_TILT Servo gimbal
- SOFTSERIAL Enable CPU based serial ports
- SONAR sonar
- TELEMETRY Telemetry output
- LED\_STRIP Multi-color RGB LED strip support

Motors

VideoTransmitter

LED Strip

Sensors

Tethered Logging

LED Strip Wiring

Wire Ordering Mode

Clear selected

Clear ALL Wiring

0 1 2 3

Choose a color for each LED

LED Functions

Function

Color modifier  Blink  Blink always

Larson scanner

Overlay

Warnings

Indicator

VTX (uses vtx frequency to assign color)

LED Orientation ('Modes&Orientaion') and Color

W N E U

S D

0	1	2	3
4	5	6	7
8	9	10	11
12	13	14	15

## CAUTION:

- 1 Aircraft of 3 inches or more need to install a capacitor, which is included in the package
  - 2 All wires should try to avoid the gyroscope, so as not to affect the normal work of the gyroscope
  - 3 After soldering, please check that all connections are correct to avoid damage after power-on.
- 

facebook



[facebook.com/geprc](https://facebook.com/geprc)

Official  
website



[www.geprc.com](http://www.geprc.com)

Instagram



[instagram.com/geprc](https://instagram.com/geprc)

You 



[youtube.com/geprc](https://youtube.com/geprc)

Manual



[geprc.com/support](https://geprc.com/support)