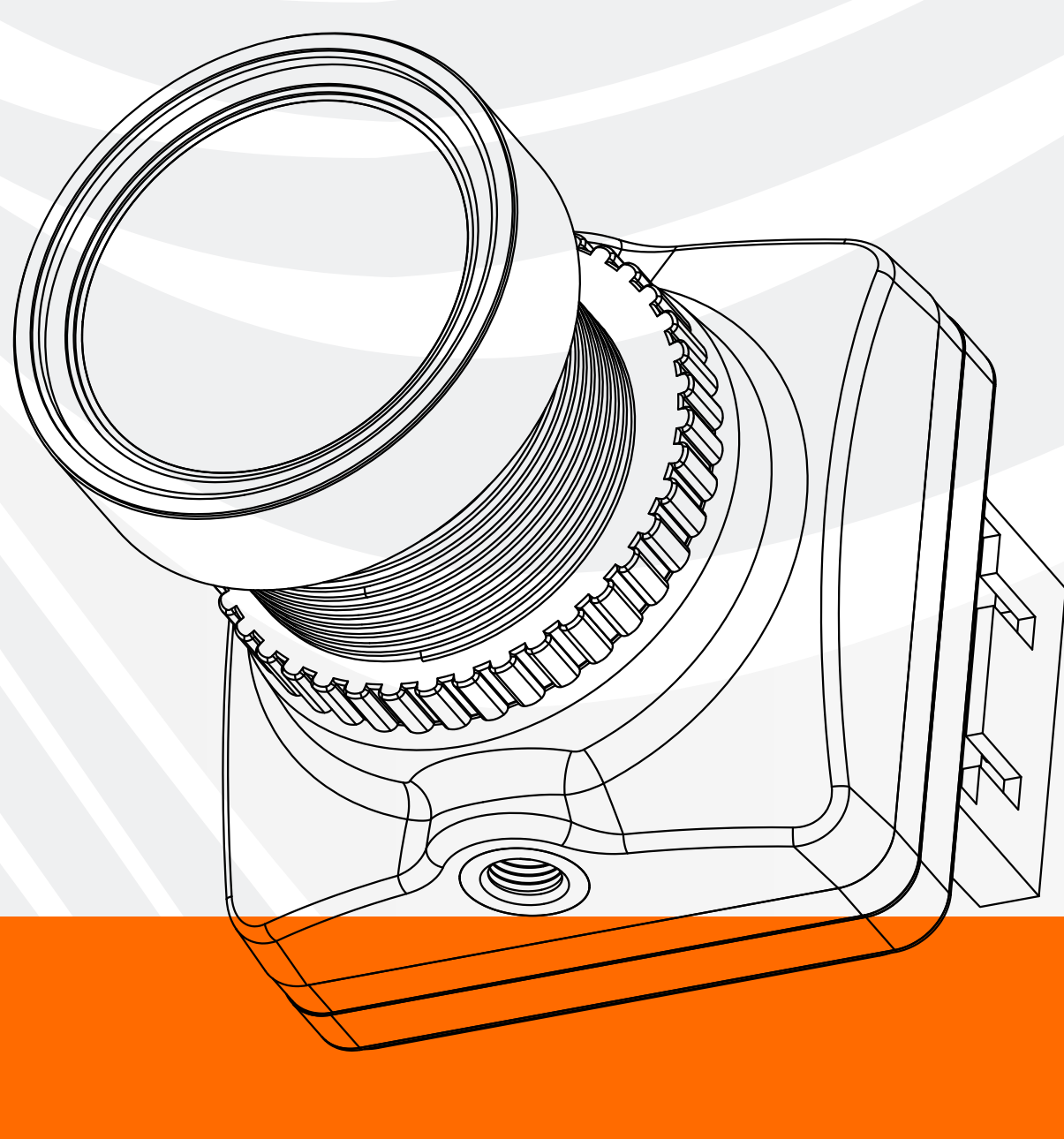


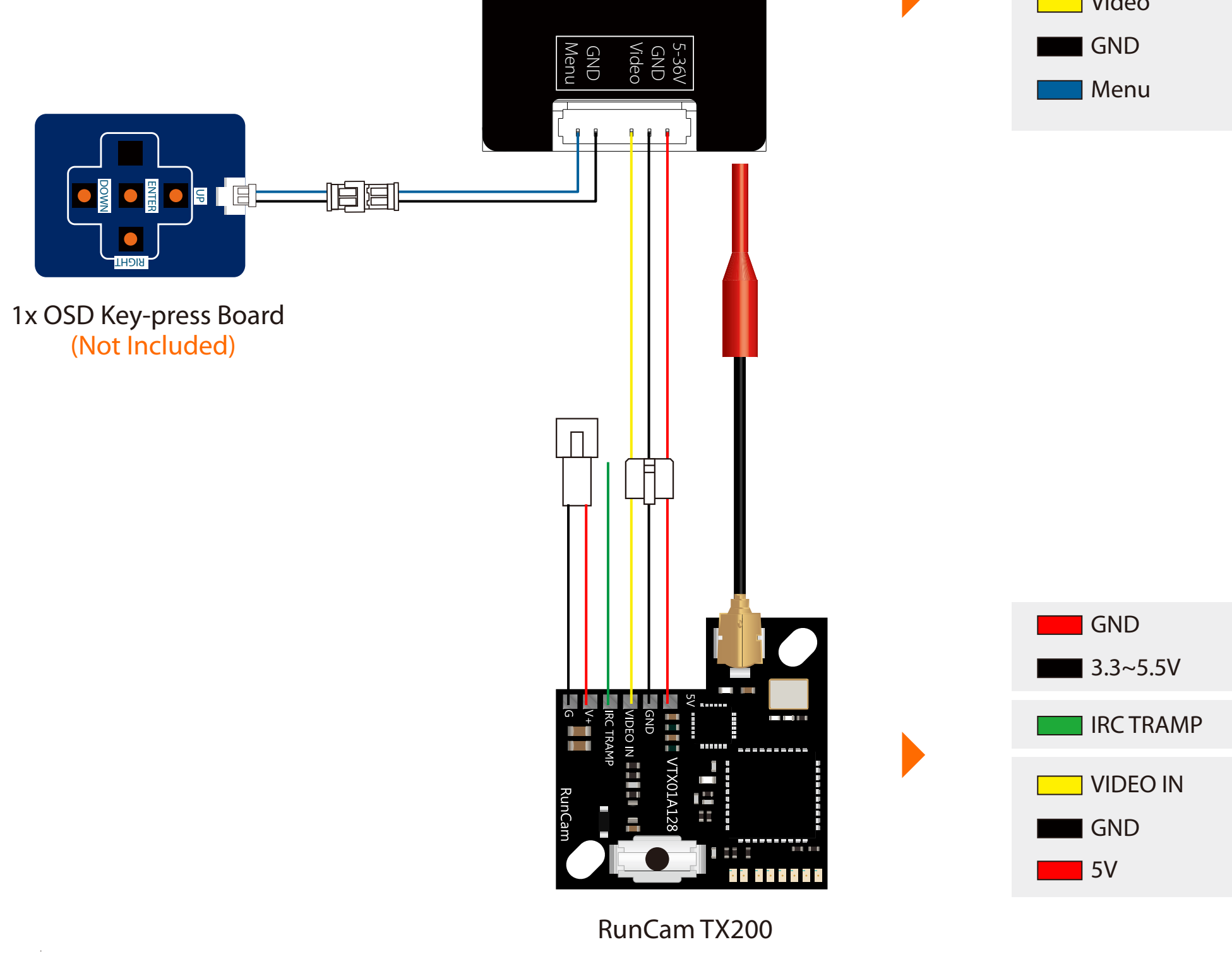
# RunCam Phoenix 2 Pro

## USER MANUAL



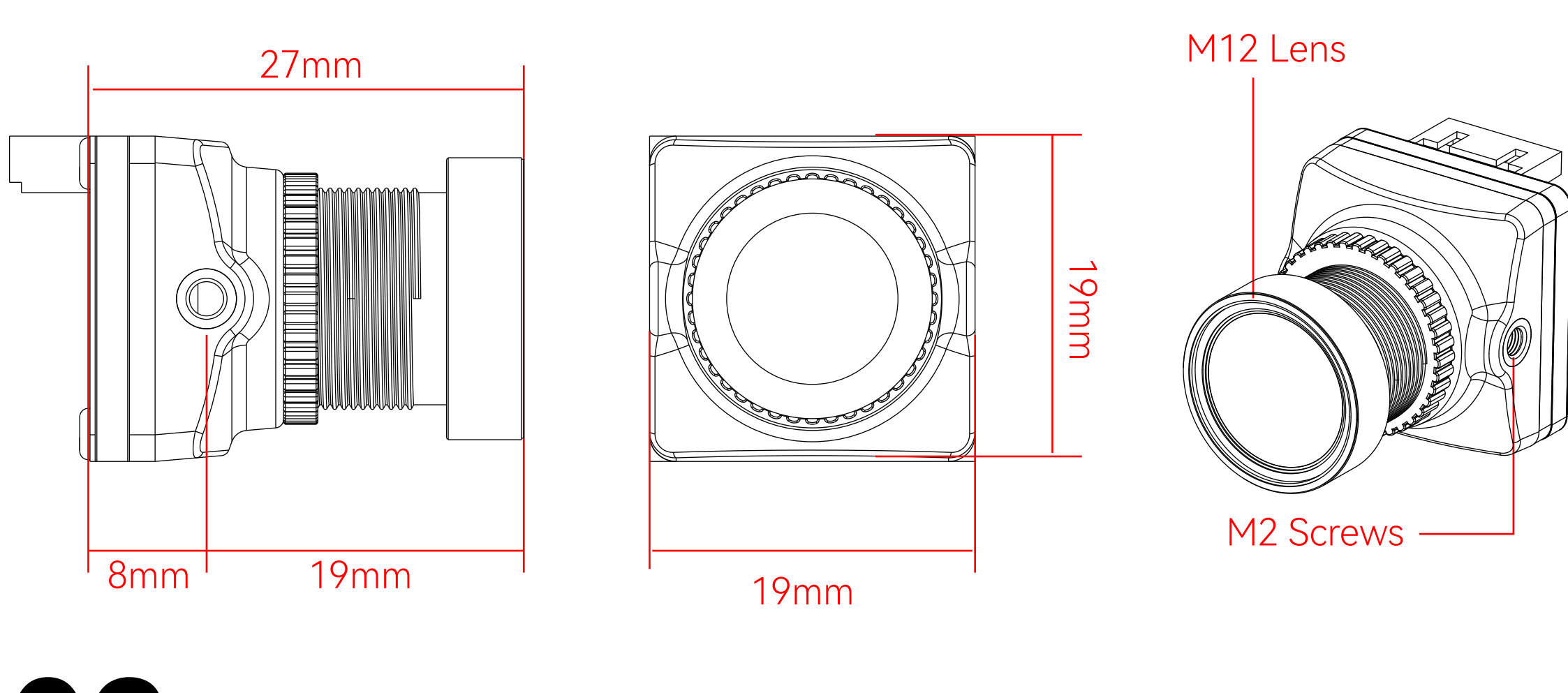
### 01

#### Joystick Control



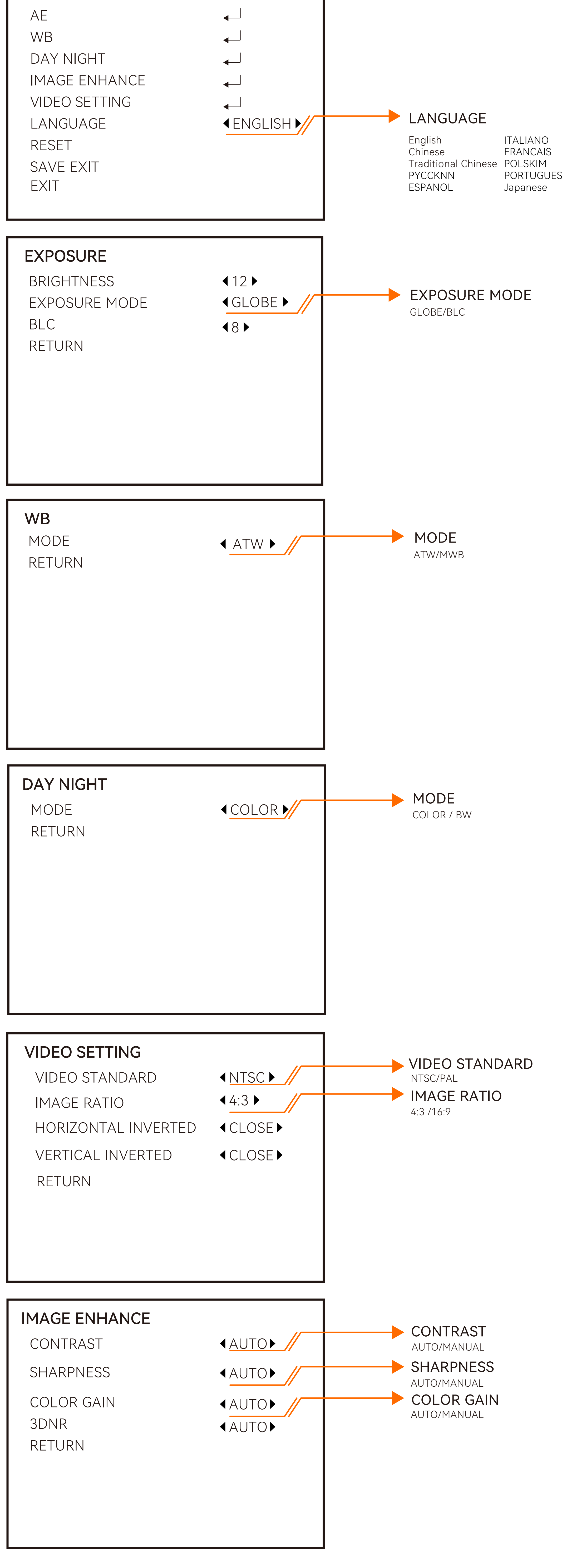
### 02

#### Dimensions & Installation



### 03

#### Camera Menu



### 04

#### Parameters

Model	RunCam Phoenix 2 Pro	
Image Sensor	1/2.8" Starlight COMS Sensor	
Horizontal Resolution	1500TVL	
Lens	FOV D:128° H:97° V:72°	FOV D:112° H:97° V:54°
Screen Format	4:3	16:9
Mirror/Flip	Available	
Signal System	NTSC/PAL	
Shutter	Rolling Shutter	
Sensitivity	15000mV/Lux · sec	
WDR	Global WDR	
Day/Night	Color/BW	
Menu Control	Cable Control	
Power	DC 5-36V	
Current	220mA@5V	120mA@12V
Housing Material	ABS	
Net Weight	7.5g	
Dimensions	19mm*19mm*27mm	