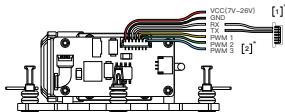


Connection and Use



[1] Connect to the USB port of Avatar V2 VTX, and need to use Avatar Goggles that support head tracking to realize wireless head tracking function.

[2] PM1
The channel is for gimbal working mode selection, there are three working modes in total.
1: Pitch and roll keep level, yaw axis follows.
2: Pitch axis keeps level, roll axis and yaw axis follow.
3: Three-axis follow.

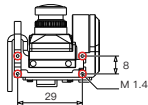
PM2
The channel is for gimbal follow sensitivity settings. Adjust the response speed of the gimbal follow. Please use the knob channel on the remote control to control.

PM3
The channel is the gimbal pitch axis control channel. Please use the rotary switch on the remote controller to control it. The gimbal rotation angle range can be changed by modifying the channel range of the remote control.

Specifications

Model	GM1
Camera Compatibility	19mm FPV Camera
Image Stabilization	±0.005°
Max Controllable Speed	±1500°/s
Max Controlled Rotational Range	Pitch: ±120°
Size	32.2x38.1x20.5mm
Weight	16g
Control Mode	PWM /UART
Head Tracking Control	Support
Voltage	7-26V
Static Power Dissipation	1.0W

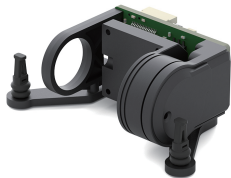
Installation Dimensions



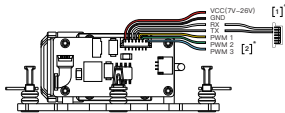
Unit: mm

CADDFPV Support
email: support@caddxfpv.com

This content is subject to change. Download the latest version from <https://www.caddxfpv.com>



接线与使用



[1] 连接到 Avatar V2 VTX的USB端口，需要搭配支持头部跟踪的Avatar Goggles，实现无线头部跟踪功能。

[2] PM1
通道为云台工作模式选择，共有三个工作模式
1: 俯仰及横滚保持水平，方向轴跟随
2: 俯仰轴保持水平，横滚轴及方向轴跟随
3: 三轴跟随

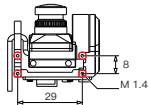
PM2
通道为云台跟随灵敏度设置，调整云台跟随的响应快慢，请使用遥控器上的旋钮通道来控制。

PM3
通道为云台俯仰轴控制通道，请使用遥控器上的波轮开关控制，可通过修改遥控器通行程来改变云台转动角度范围。

规格参数

型号	GM1
相机兼容性	宽度19mm FPV相机
稳像精度	±0.005°
最大可控转速	±1500°/s
可控旋转范围	俯仰: ±120°
尺寸	32.2x38.1x20.5mm
重量	16g
控制模式	PWM /UART
头部跟踪控制	支持
电压	7-26V
功耗	1.0W

安装尺寸



单位: mm

CADDFPV 技术支持
email: support@caddxfpv.com
此内容可能会修改，从以下位置下载最新版
<https://www.caddxfpv.com>