



### 机型规格

#### Product Specifications

机架类型: X型  
上板厚度: 2mm  
卡簧孔径:  $\varnothing 2\text{mm}$   
推荐电池: 6S

对角轴距: 492mm  
底板厚度: 1.5mm  
设备层高: 20mm  
电机安装孔距: 19x19mm(M3)

机架净重: g  
机臂厚度: 1mm  
支持最大桨叶: 10 inch  
推荐电机: 31~32系列电机

机臂直径: 25mm  
摄像头间距: 19mm/20mm  
飞控孔距: 30.5x30.5mm (M3)

Frame Shape: Type X  
Top Plate Thickness: 2mm  
Motor circlip:  $\varnothing 2\text{mm}$   
Recommended Lipo: 6S

Motor to Motor: 492mm  
Bottom Plate Thickness: 1.5mm  
Max Stack Height: 20mm  
Motor Mounting: 19x19mm(M3)

Frame Net Weight: g  
Arm Thickness: 1mm  
Supported Prop Size: 10 inch  
Recommended Motor: 31-32 Series

Arm diameter: 25mm  
Camera Spacing: 19mm/20mm  
FC Stack Mount: 30.5x30.5mm(M3)

6

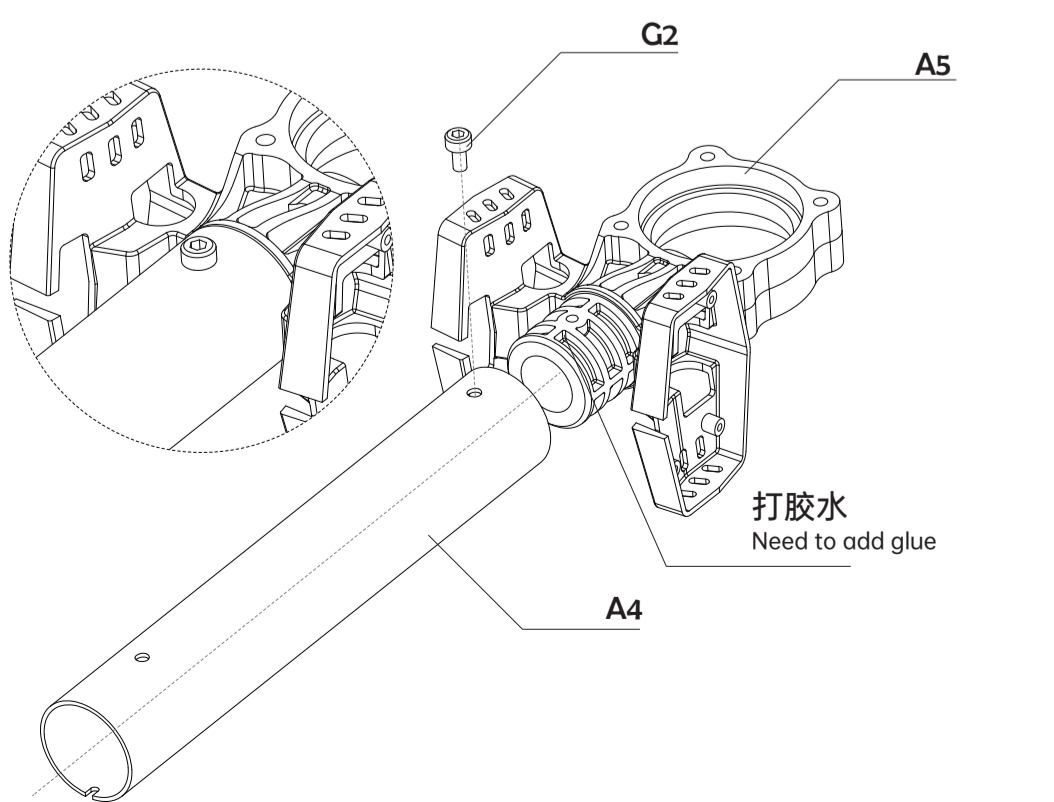
### 配件清单

#### Parts List

<b>A1</b> 	<b>A2</b> 	<b>A3</b> 	<b>A4</b> 	<b>A5</b> 	<b>A6</b> 
KN 104 底板 KN 104 base plate	KN 104 上板 KN 104 Top plate	分电板 KN PDB V2	KN 150mm 碳管 KN 150mm carbon pipe	KN电机/电调固定架 KN motor/electric adjustment fixing bracket	电机臂固定座 Motor arm fixing seat
<b>A7</b> 	<b>A8</b> 	<b>B1</b> 	<b>B2</b> 	<b>B3</b> 	<b>B4</b> 
电调侧盖 (左+右) ESC side cover (L+R)	电机座固定板 Motor base fixing plate	XT60 XT60	MR30-M/FB MR30-M/FB	USB 延长线 USB extension cable	KN 接收机固定板V1 KN receiver fixing plate V1
<b>B5</b> 	<b>B6</b> 	<b>B7</b> 	<b>B8</b> 	<b>B9</b> 	<b>C1</b> 
天线玻纤板V2 Antenna fiberglass board V2	KN 电池带 Leather battery strap	KN 防滑垫 non-slip mat	KN 摄像头座 KN camera base	天线安装底座 Antenna mounting base	KN H1 摄像头 KN H1 camera
<b>C2</b> 	<b>C3</b> 	<b>C4</b> 	<b>C5</b> 	<b>C6</b> 	<b>C7</b> 
KN 电机 KN motor	KN 图传 KN image transmission	KN Y形天线 KN Y-shaped antenna	KN 飞控 KN FC	S60 电调 S60 ESC	螺旋桨 Propeller
<b>D1</b> 	<b>D2</b> 	<b>D3</b> 	<b>D4</b> 	<b>E1</b> 	<b>E2</b> 
M5 防松螺母 M5 anti loosening nut	M3 压铆螺母 M3 press riveting	M3 黑色尼龙螺母 M3 transparent PC nut	M2 螺母 M2 nut	M2 x 5 自攻螺丝 M2 x 5 Cross screw	M2 x 6 自攻螺丝 M2 x 6 Cross screw
<b>E3</b> 	<b>F1</b> 	<b>F2</b> 	<b>G1</b> 	<b>G2</b> 	<b>G3</b> 
M2 x 8 十字螺丝 M2 x 8 Cross screw	M2 x 4 内六角螺丝 M2 x 4 Allen screw	M2 x 8 内六角螺丝 M2 x 8 Allen screw	M3 x 5 沉头内六角 M3 x 5 Allen screw (antenna)	M3 x 6 扁头螺丝 M3 x 6 Truss head	M3 x 8 扁头螺丝 M3 x 8 Truss head
<b>G4</b> 	<b>G5</b> 	<b>G6</b> 	<b>G7</b> 		
M3 x 10 扁头螺丝 M3 x 10 Truss head	M3 x 11 扁头螺丝 M3 x 11 Truss head	M3 x 24 扁头螺丝 M3 x 24 Truss head	M3 x 40 碳钢螺丝 M3 x 40 Truss head (metal)		

### 电机底座组装

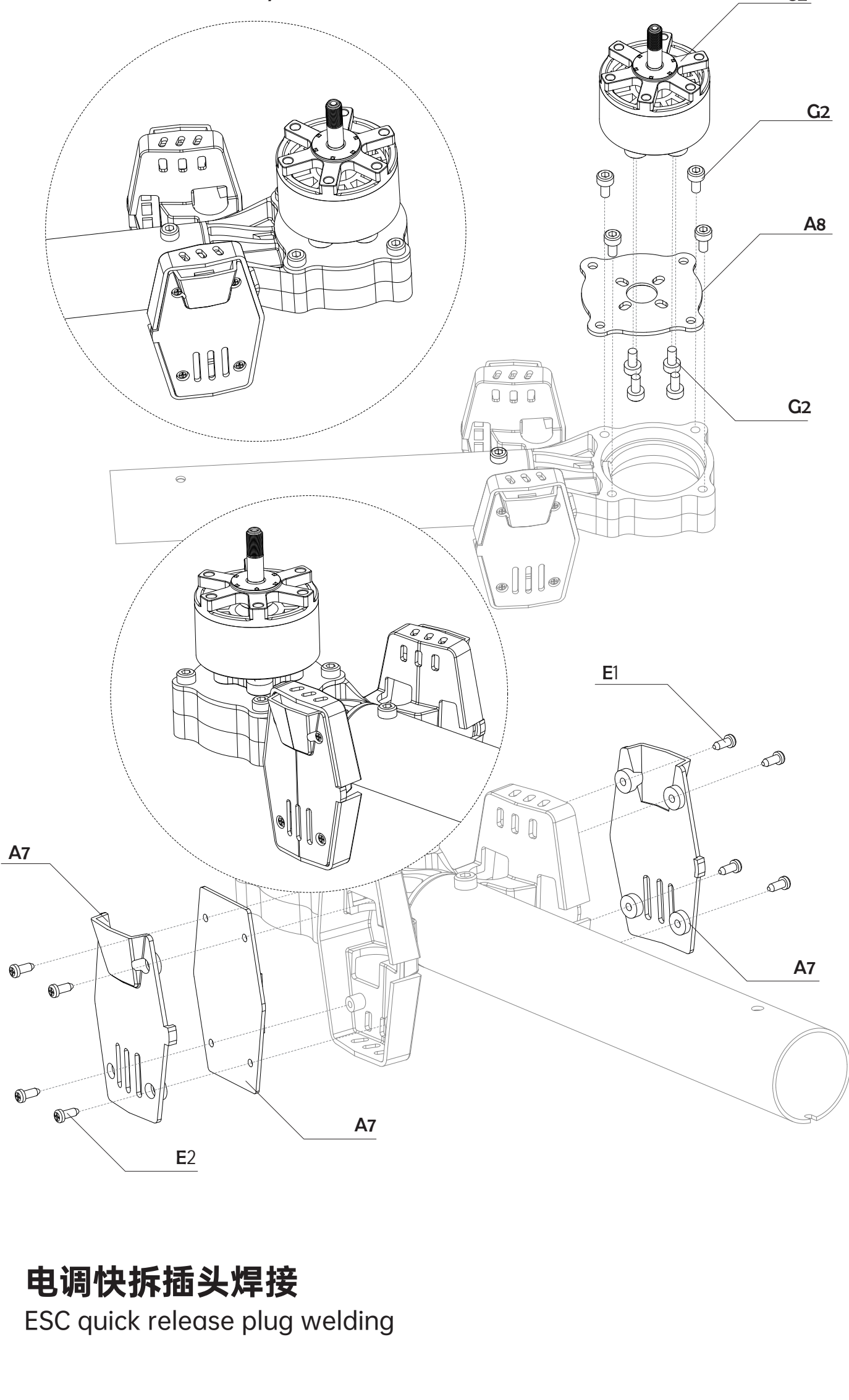
#### Motor base assembly





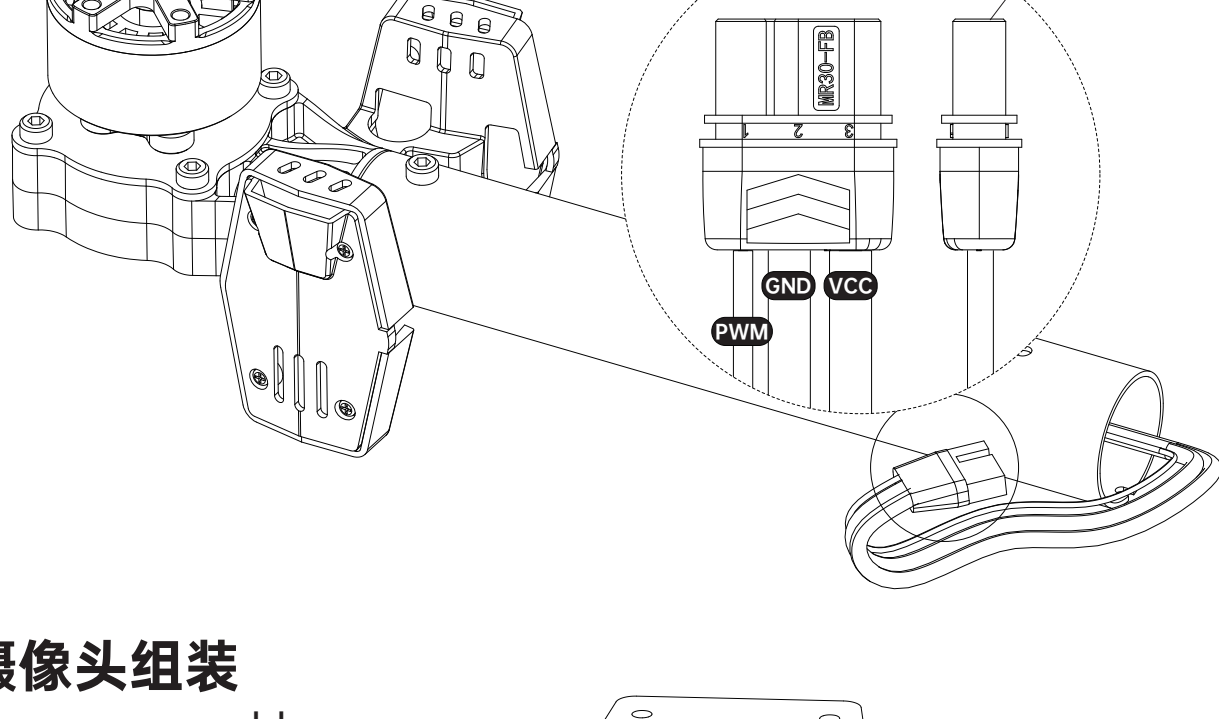
## 电机/电调组装

Motor/ESC assembly



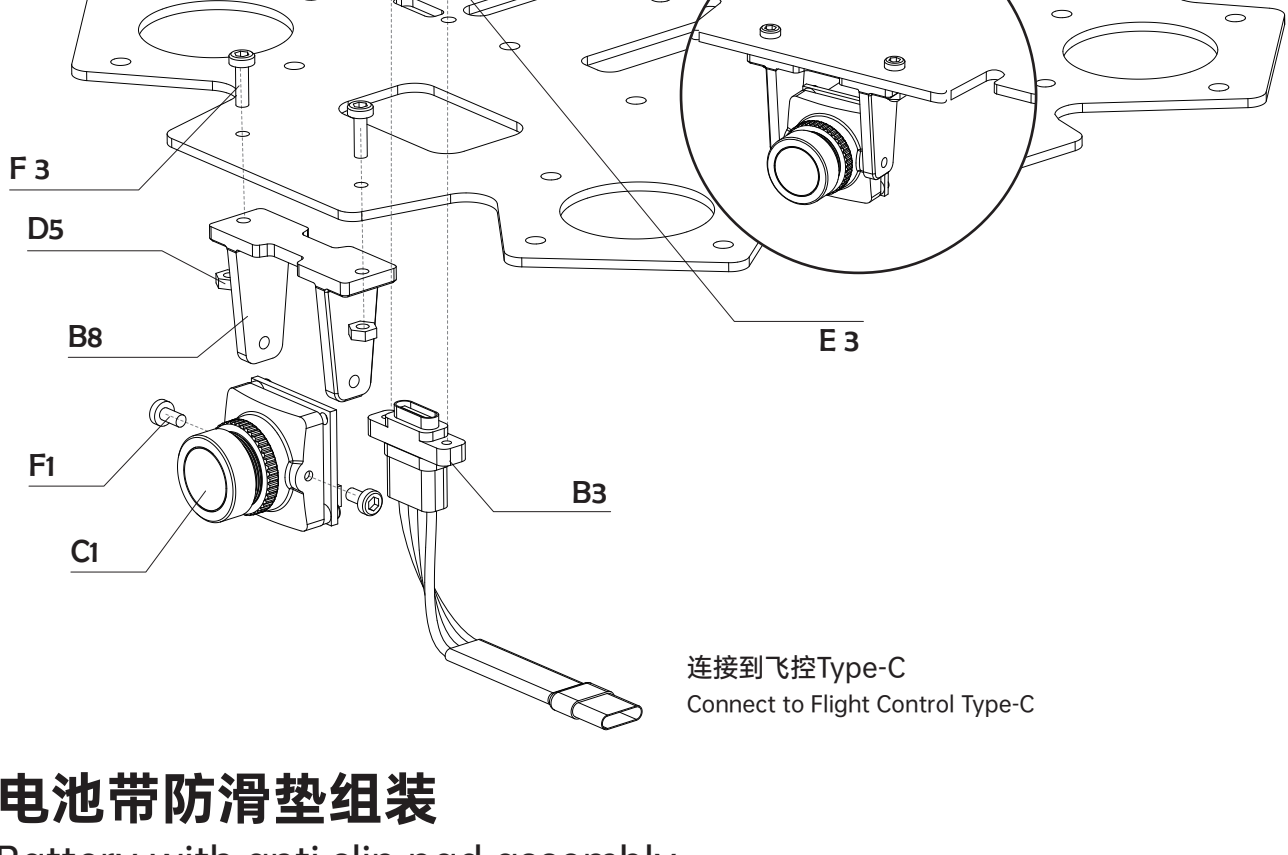
## 电调快拆插头焊接

ESC quick release plug welding



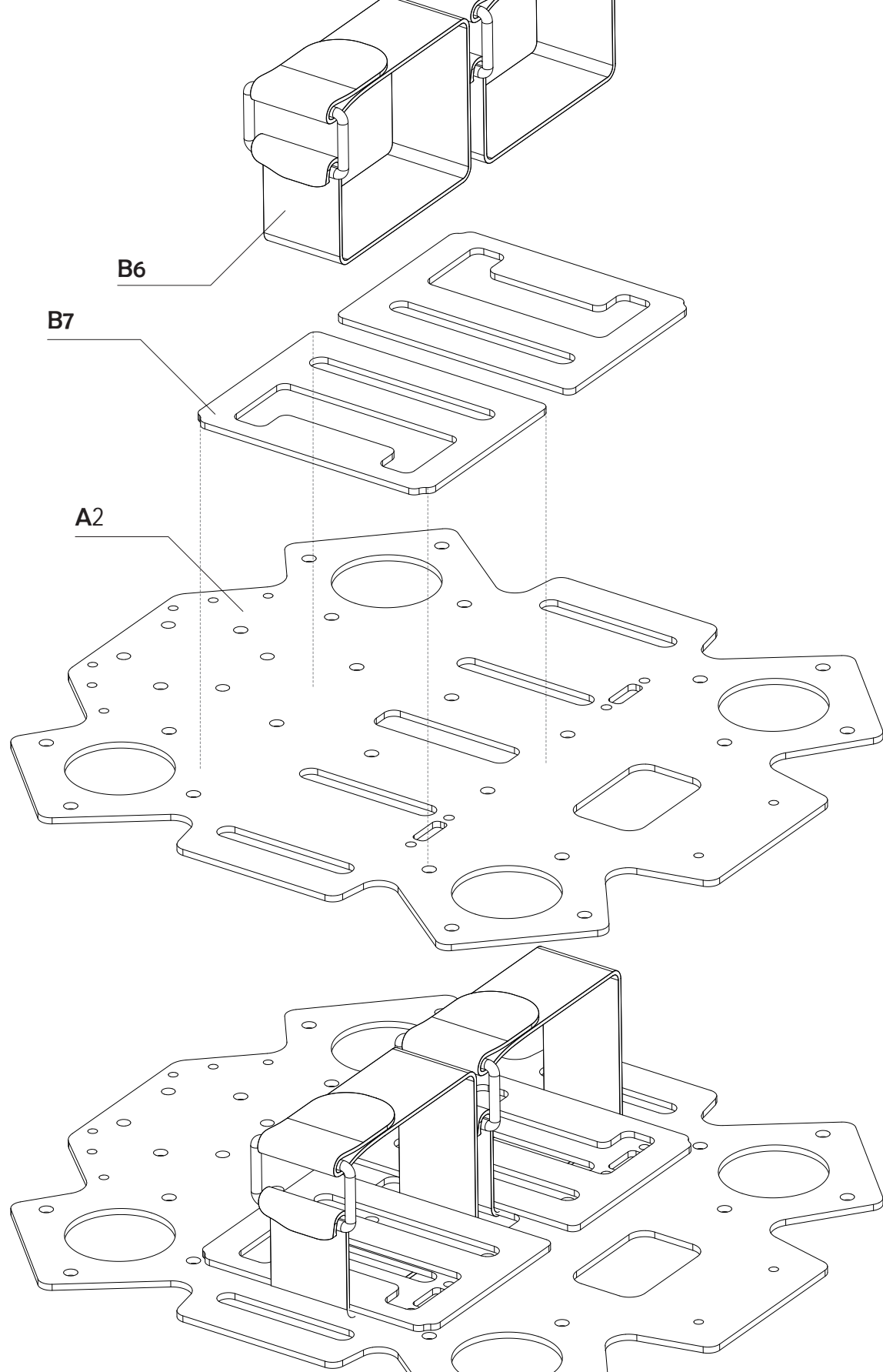
## 摄像头组装

Camera assembly



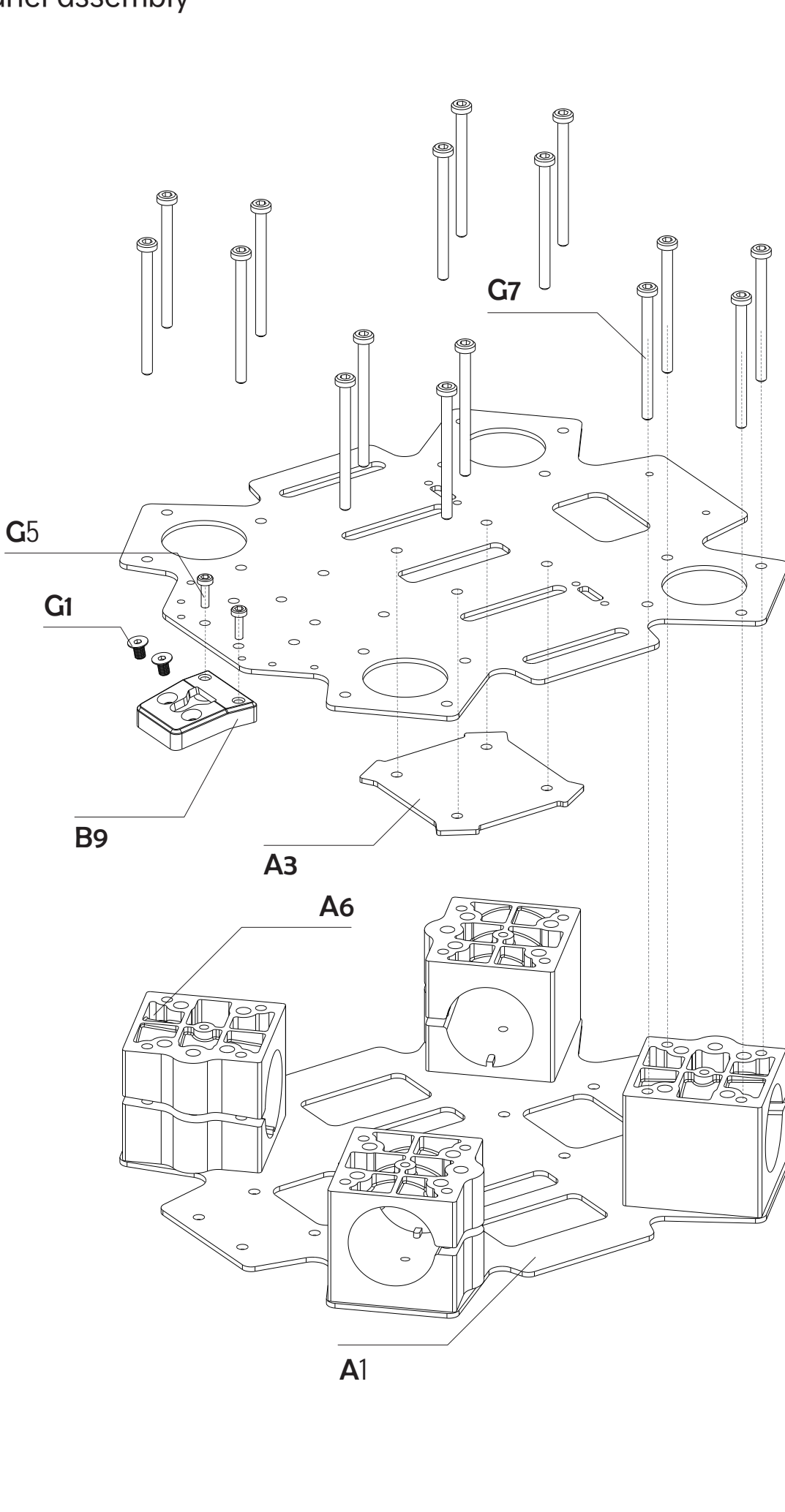
## 电池带防滑垫组装

Battery with anti slip pad assembly



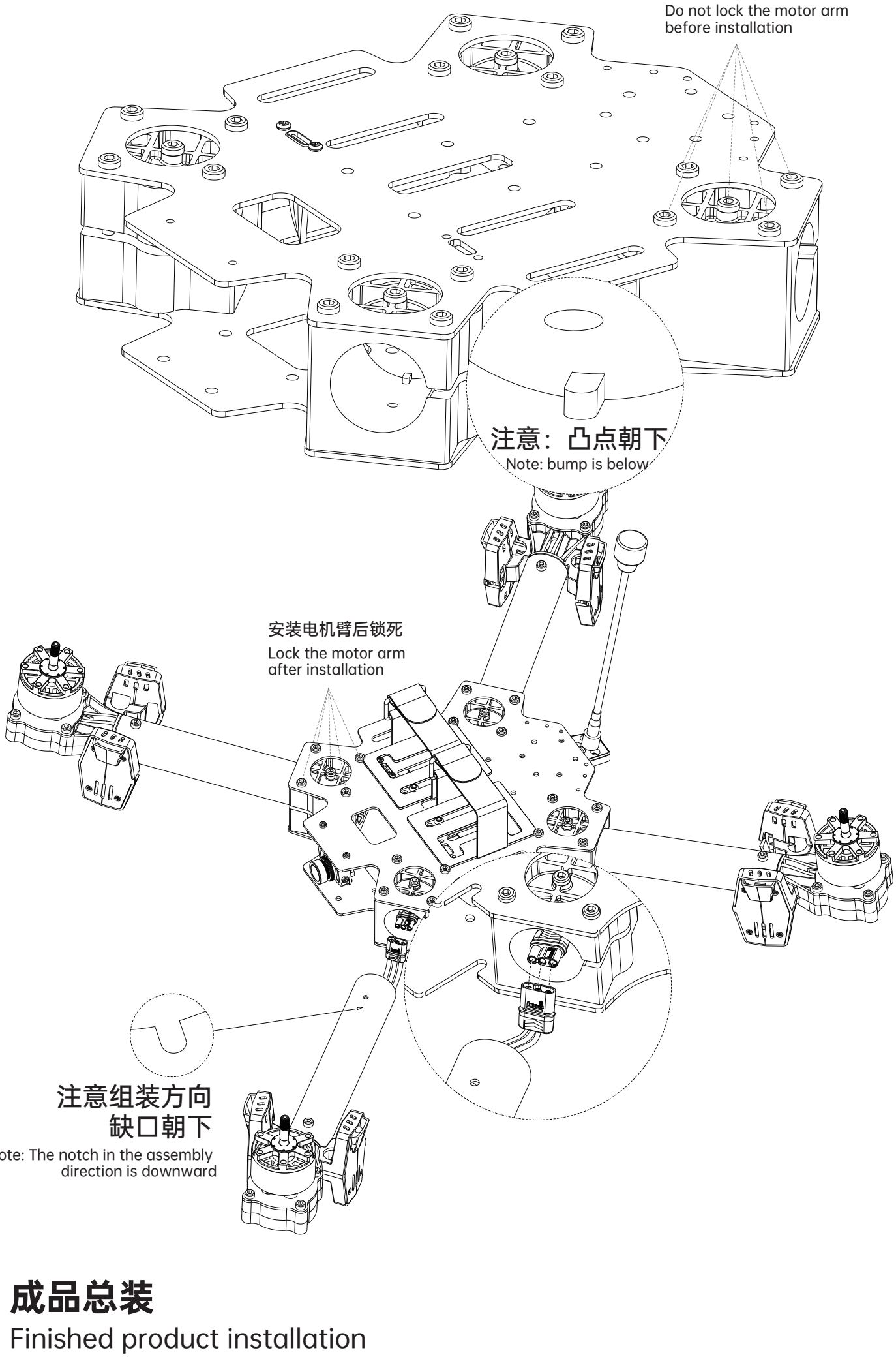
## 上下板组装

Panel assembly



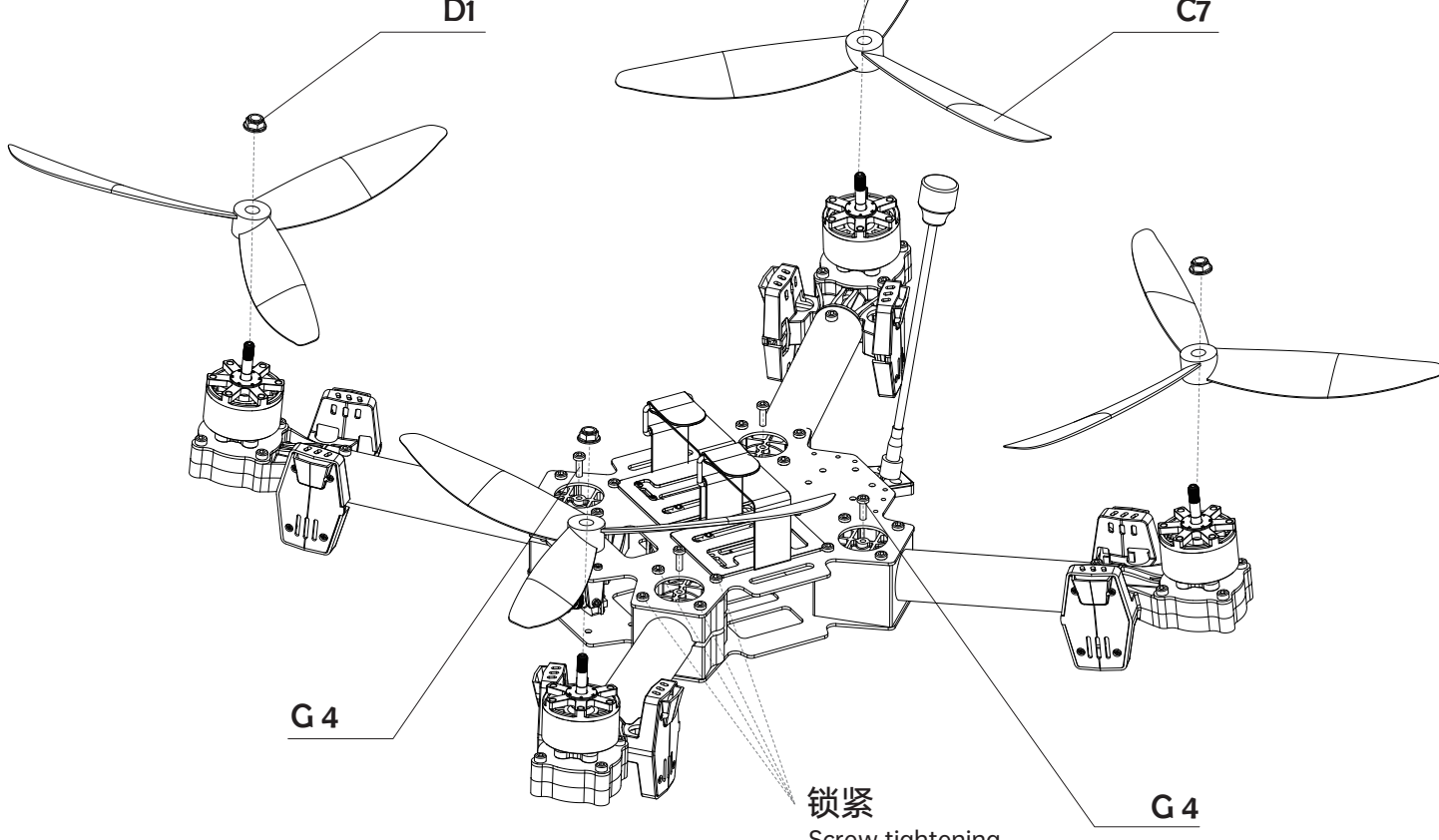
## 电机臂组装

Motor arm assembly



## 成品总装

Finished product installation



We provide outstanding service since 2012

Manufacturer : Diatone  
Email : service.support@diatone.hk  
Tel : (+86) 0769-82100057 Web : www.diatone.us  
Address : Baijiayi Technology Park A-3, Yantian, Fenggang, Dongguan, Guangdong, China

更详细的信息, 可通过访问DIATONE官网获得  
For more information, please refer to the Diatone official website