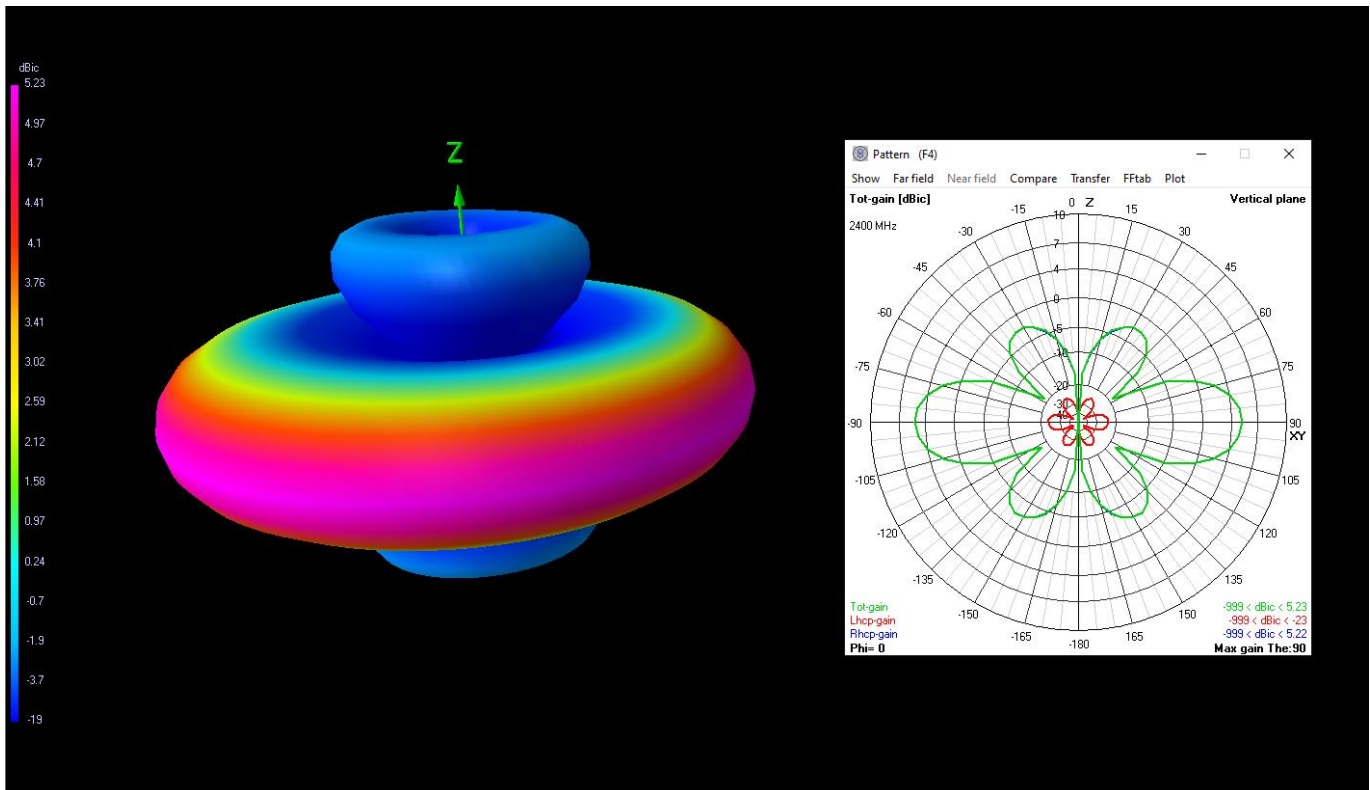


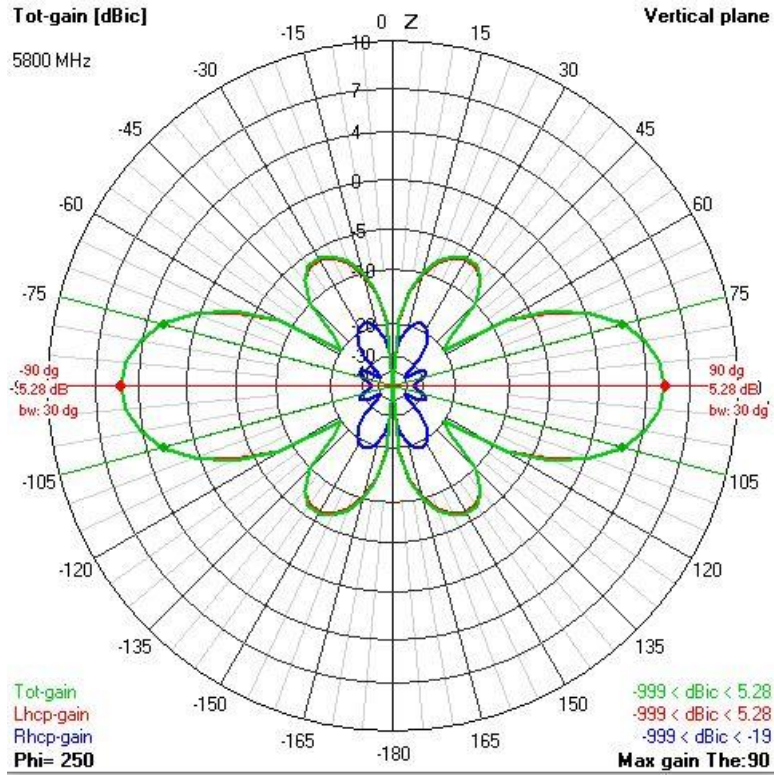
The Sky Hammer is a high gain circularly polarized omni directional antenna. The Sky Hammer utilizes 2 circularly polarized antennas in a phased array configuration to increase the range of the signal. The high axial ratio resists the effects of multipath fading and results in a clear signal when coupled with a similarly high axial ratio antenna. Typical uses are unmanned aerial vehicles, unmanned ground vehicles, data communications, WiFi, and mobile applications.

	915MHz	1.3GHz	2.4GHz	5.8GHz
Frequency range	890-950MHz	1230-1350MHz	2380-2500MHz	5550-6100MHz
Gain	5.25dbic	5.25dbic	5.25dbic	5.25dbic
-3db point (horizon)	+/- 18 degrees	+/- 18 degrees	+/- 18 degrees	+/- 18 degrees
SWR	< 1.6	< 1.6	< 1.6	< 1.6
Polarization	Circular	Circular	Circular	Circular
Dimensions	52 X 52 X 340mm	52 X 52 X 240mm	35 X 35 X 125mm	15 X 15 X 54mm
Axial ratio	>0.9	>0.9	>0.9	>0.9

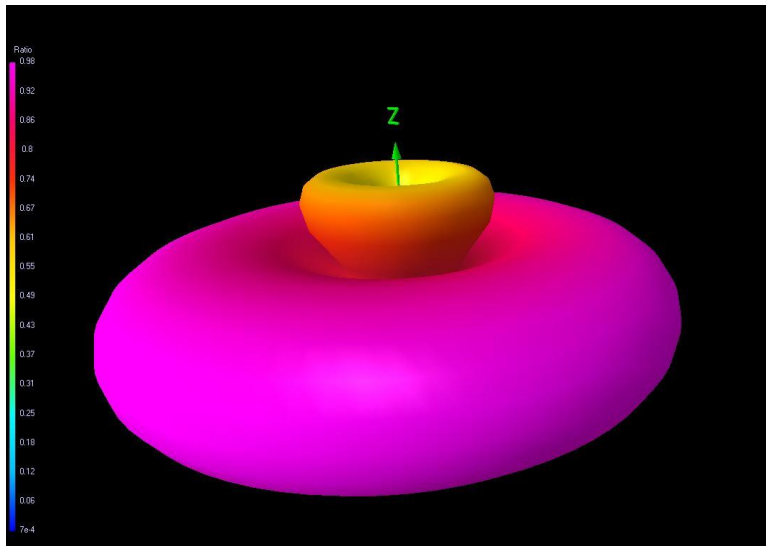


2D and 3D radiation plot (2.4GHz)

Sky Hammer
915Mhz / 1.3GHz / 2.4GHz / 5.8GHz



5.8GHz 2D radiation plot



Axial ratio 3D plot

Sky Hammer
915Mhz / 1.3GHz / 2.4GHz / 5.8GHz



2.4GHz Sky Hammer in side feed configuration



5.8GHz Sky Hammer in base feed configuration

Sky Hammer
915Mhz / 1.3GHz / 2.4GHz / 5.8GHz