

Step 1

Check the model if it is RC PRO (which support DJI Mavic 3 Pro

DJI Mavic 3 Classic DJI Mini 3 Pro DJI Mavic 3 DJI Air 2S)

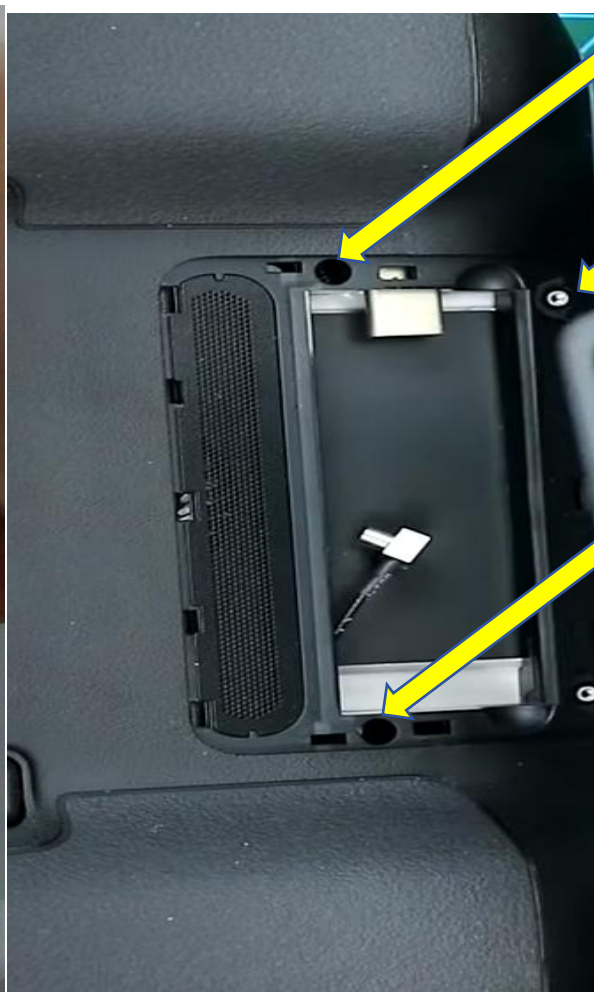


Step 2

Preparation(we provide in a set Except for pointed nose pliers and flat screwdriver)



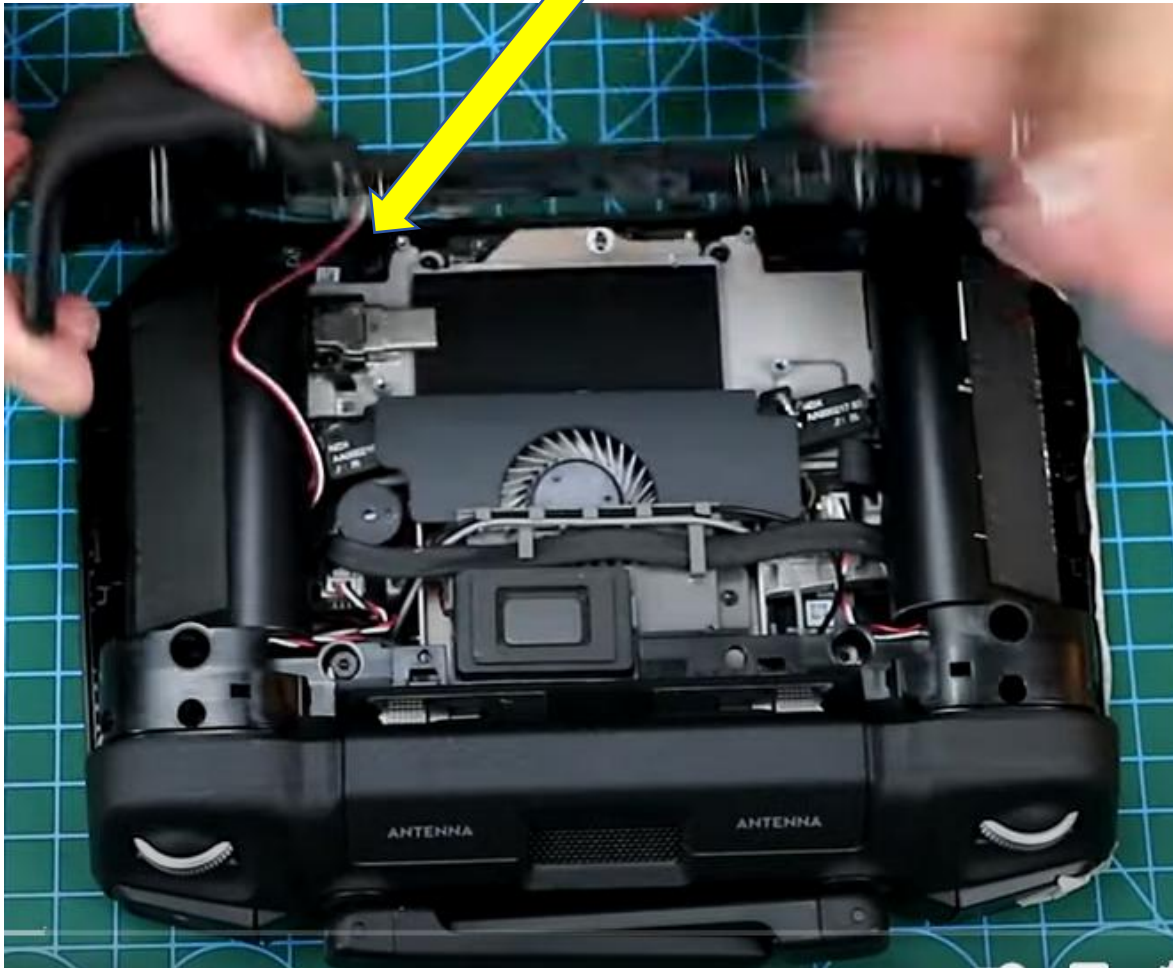
Step 3 Remove four screws



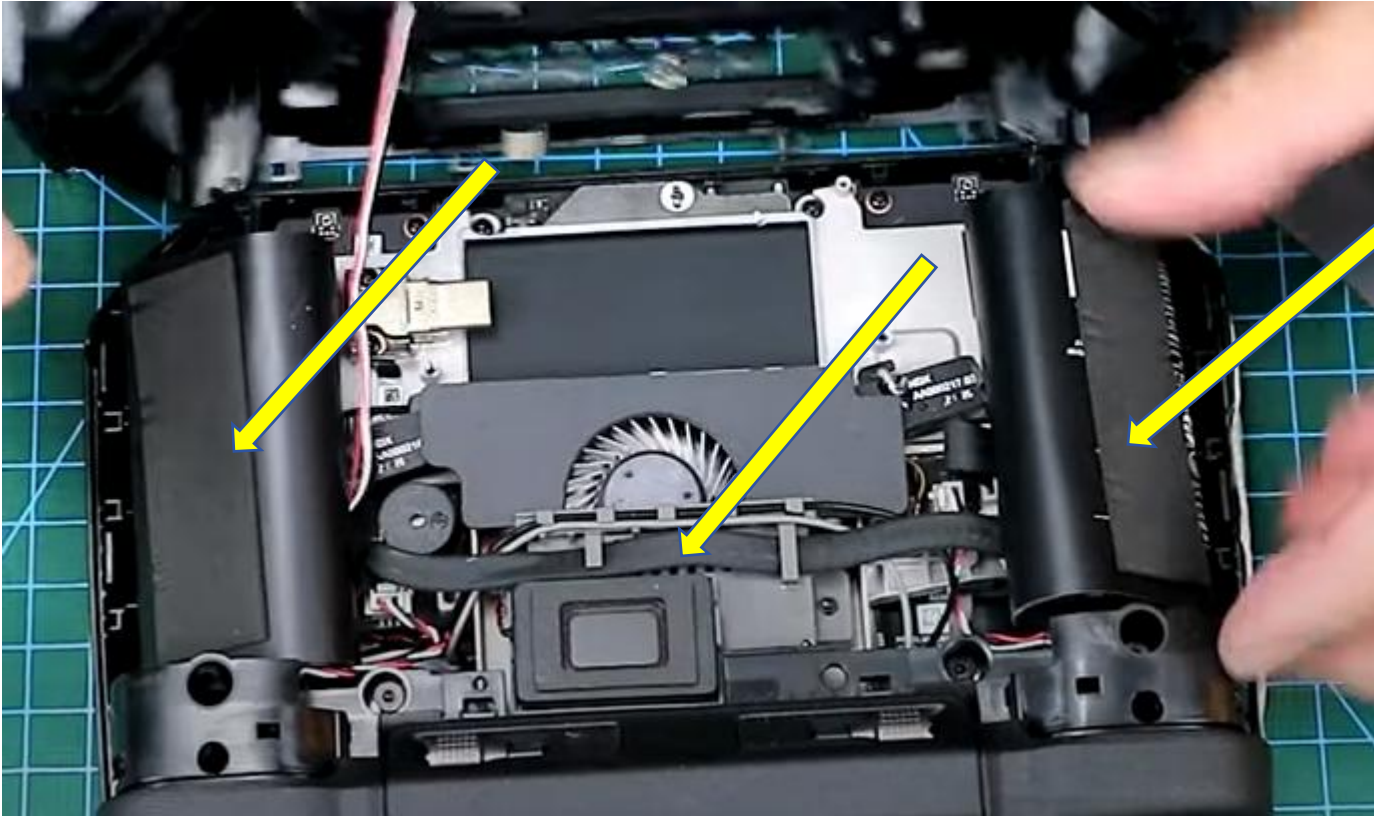


Step 4 remove the two hidden screws. Pry open this remote control along the edge

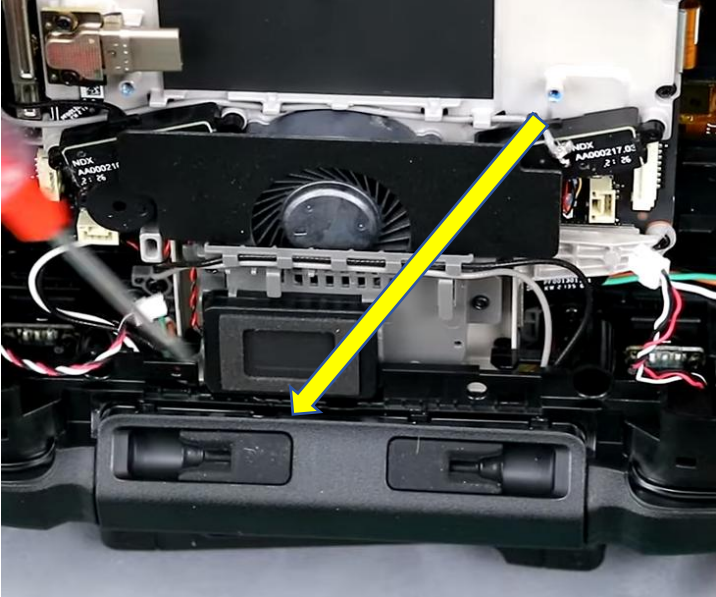
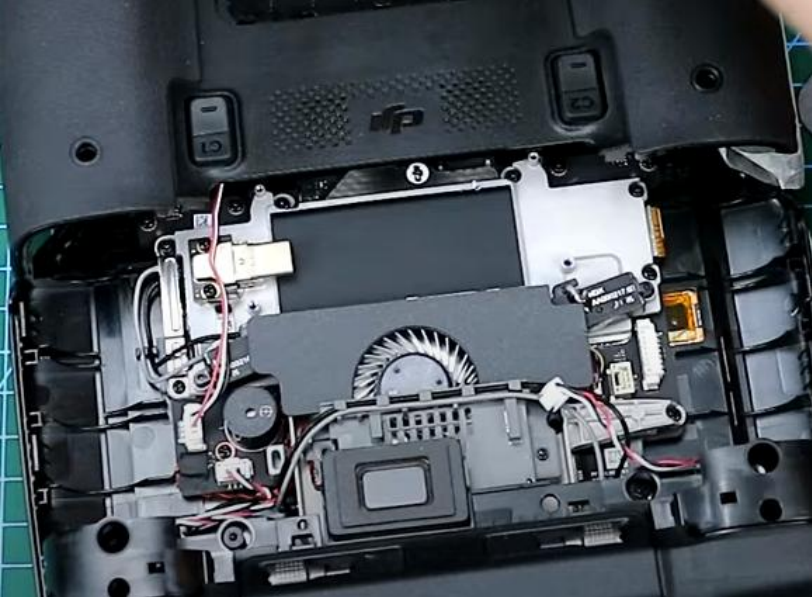
Step 5 pls watch out this cable,



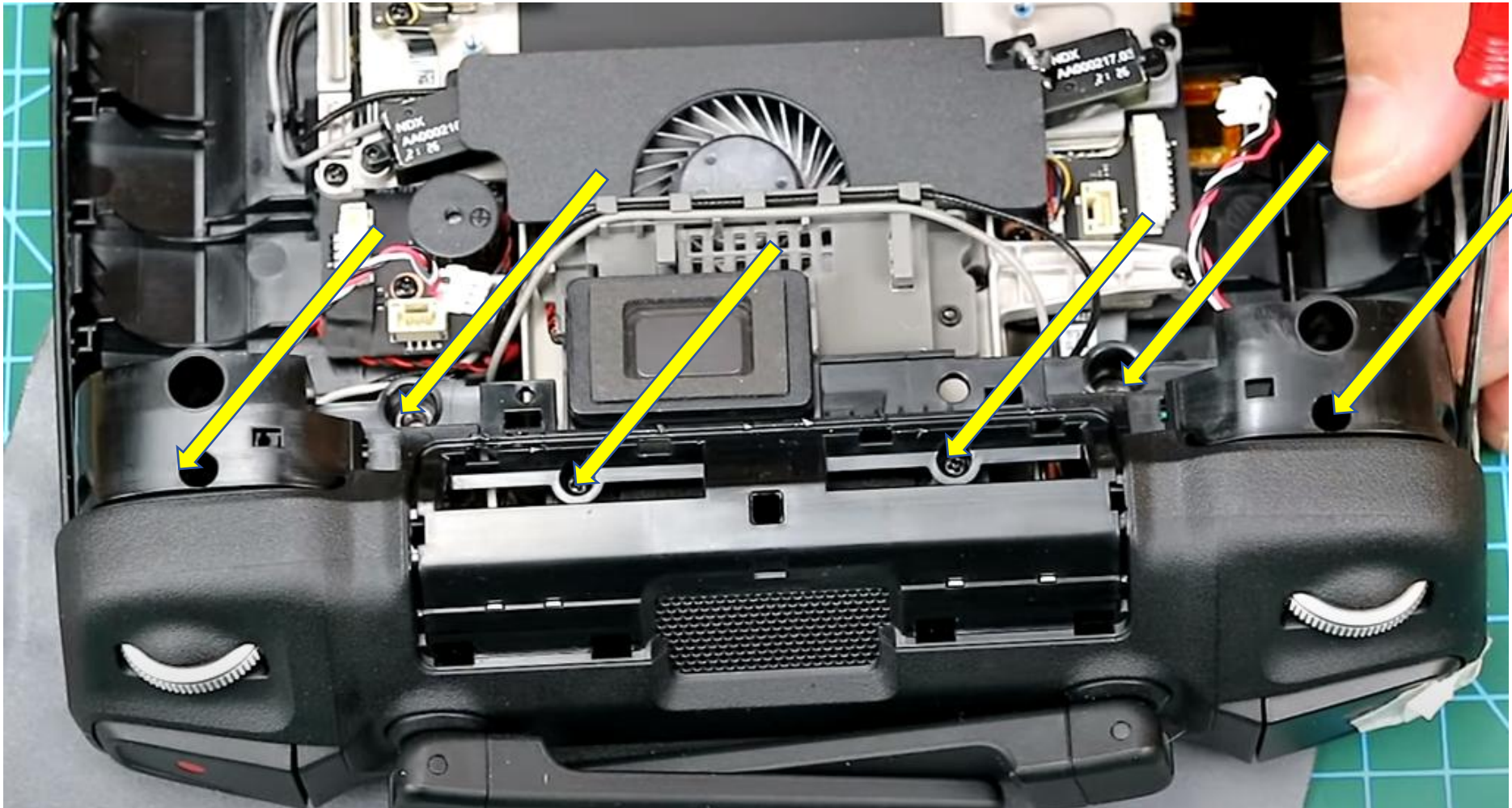
Step 6 Gently remove the battery and cable



Step 7 Pry open this piece



Step 8 remove the screws



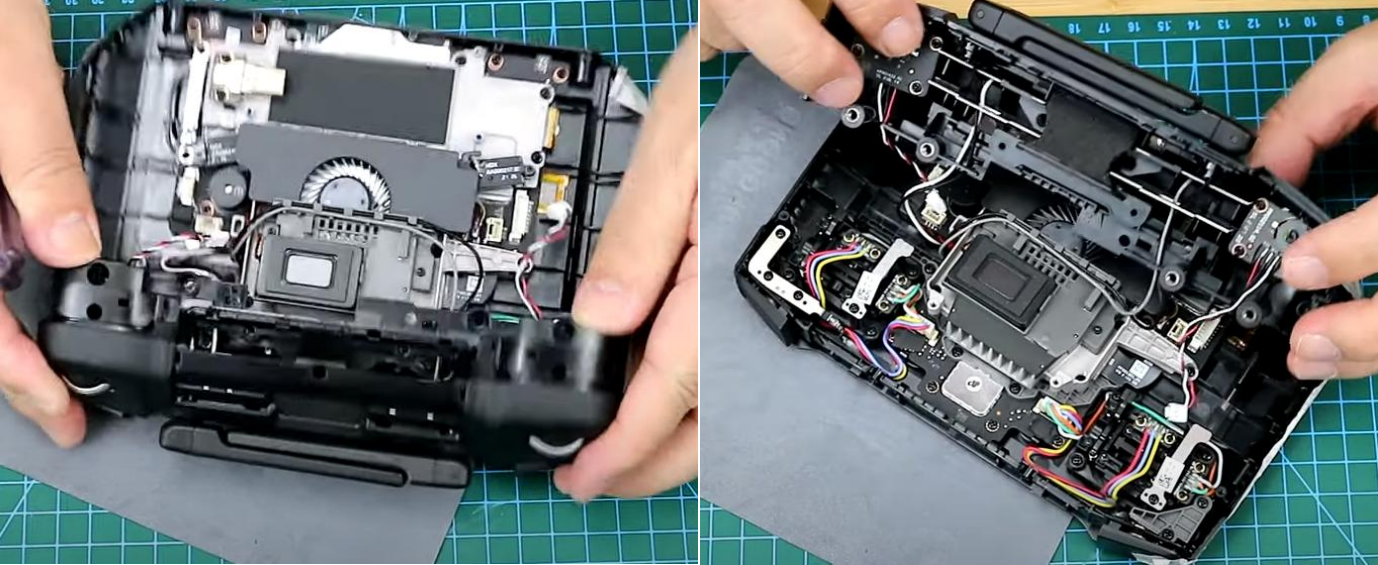
Step 9 Pry open this place



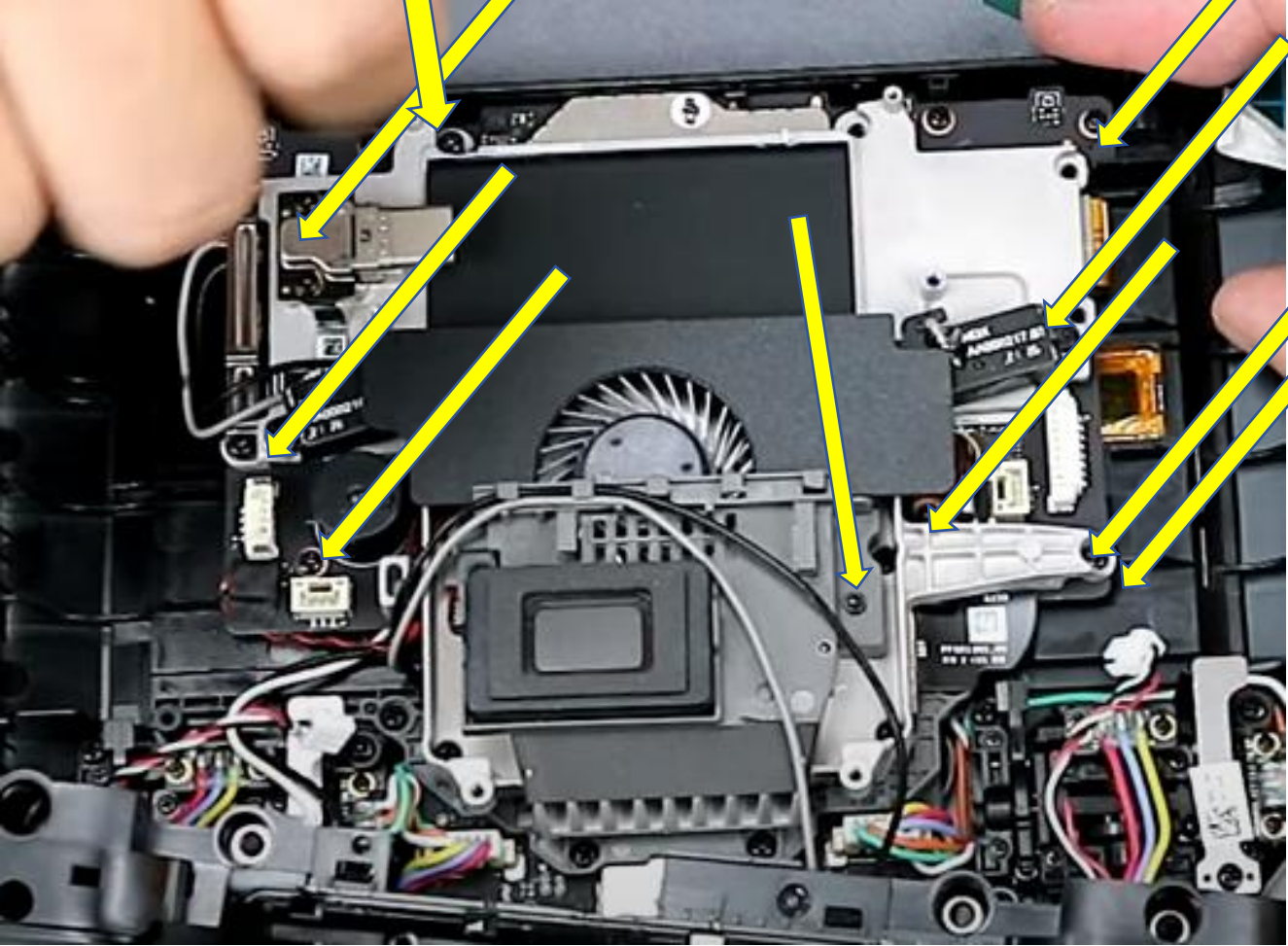
Step 10 remove the two screws



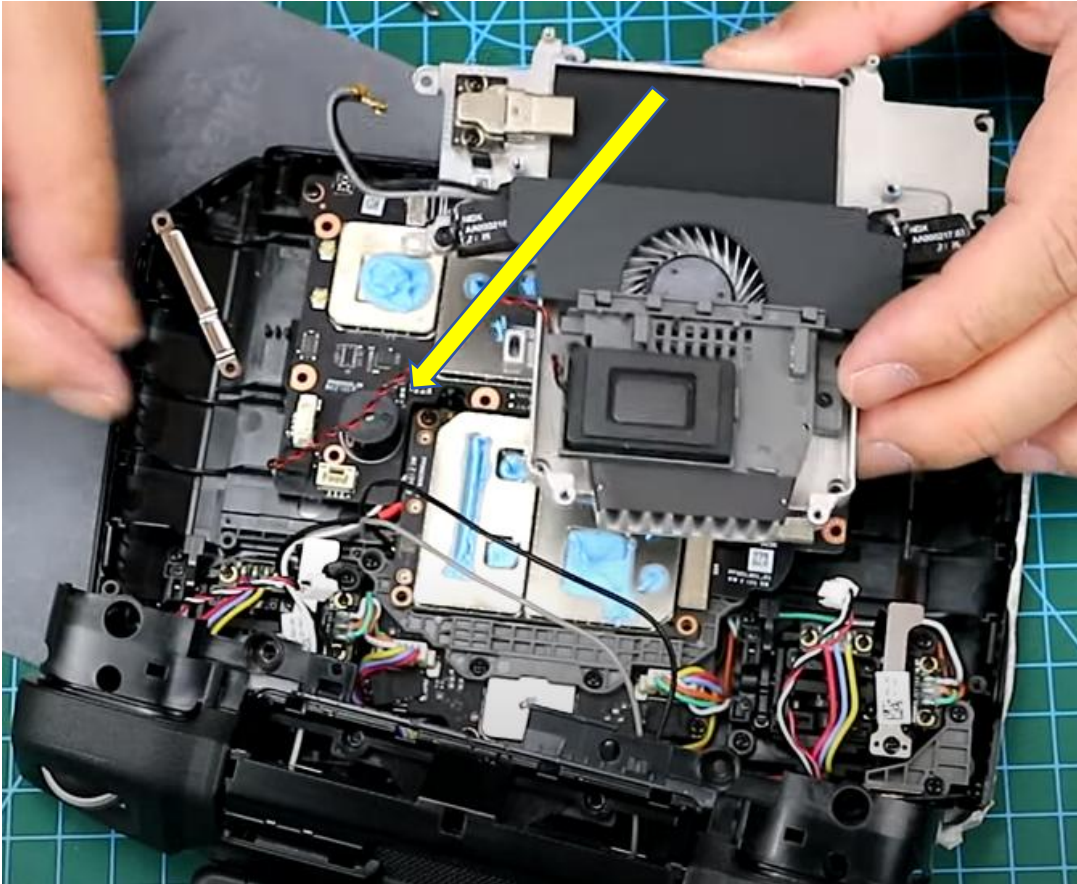
Step 11 remove the upper part which connected with antenna



Step 12 remove the screws



Step13 remove this panel but pay attention to the cable

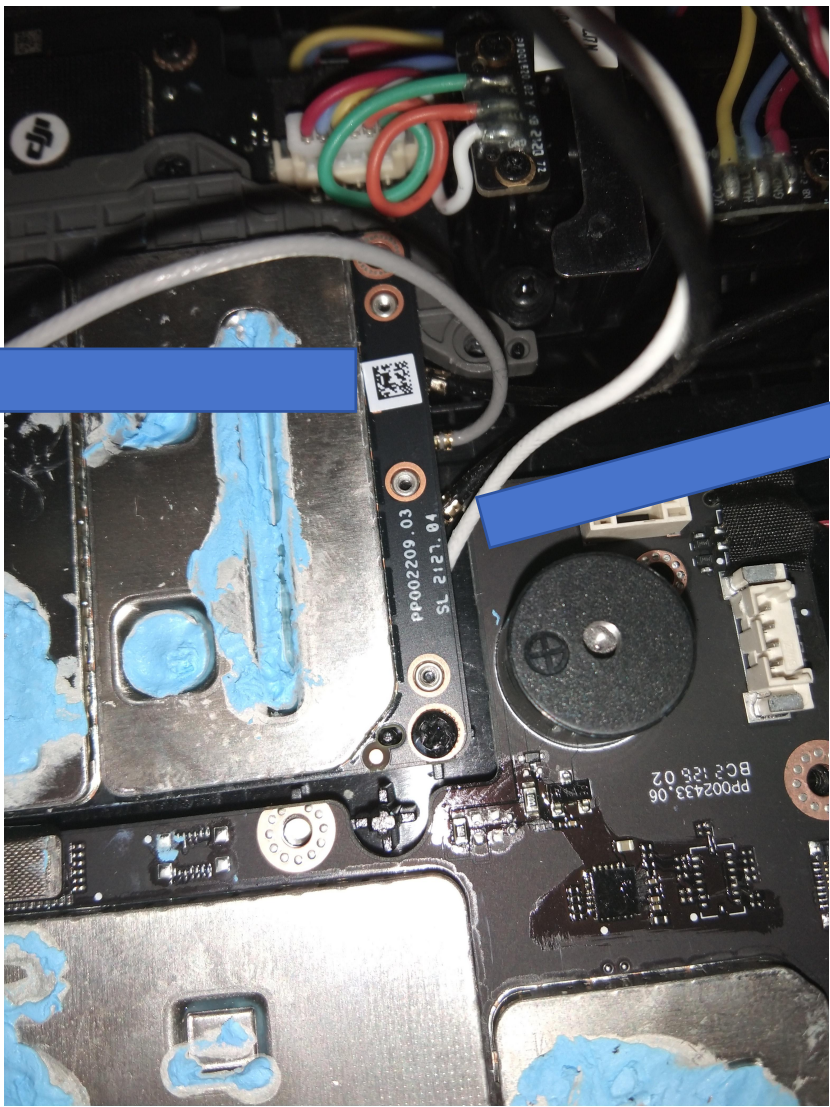


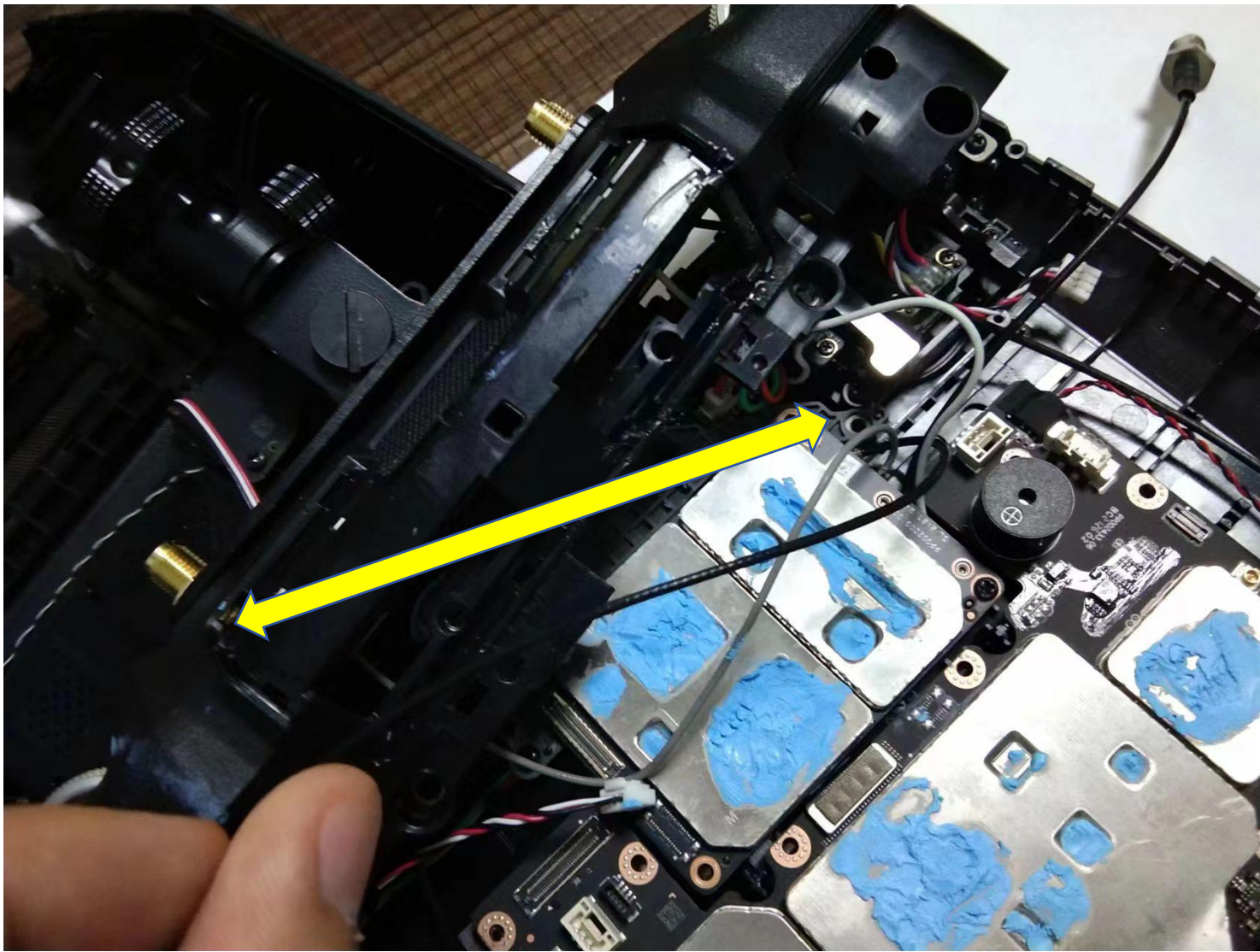
Step 14 remove the antenna and switch to our extending cable with qma heard



Step 15

Connect the cables, keep the white cables remaining. The pin one black cable to left and the pin 3 black cable to right





up black cable to left

Then you could assemble back. And use.

